



ART • PEOPLE • PASSION

NEWSLETTER & PROGRAMME

JUNE 2021

LOCATION: 171A Elizabeth St. West

PHONE: 07 5716859

EMAIL: taurangaartsociety@xtra.co.nzFACEBOOK: [Tauranga Society of Artists](https://www.facebook.com/TaurangaSocietyofArtists)WEBSITE: www.taurangasocietyofartists.org.nz

2020/2021 COMMITTEE

President: Debbie Clarke 027 496 1752**Vice President:** Adrian Muller 027 542 2167**Secretary:** Carol King 07 576 1891**Treasurer:** Lynn Webb 027 945 0275**Newsletter Editor:** Alison Underwood 021 2500 504

John Campbell 021 663 355

Kinsa Hays 021 864 654

Wendy Fullerton 027 330 3698

Jitske Schokking 07 576 5894

REMINDER - Annual General Meeting, Tuesday 1 June

VENUE - Elizabeth Street Community Centre, 169 Elizabeth Street West.**This is opposite the Society's Art Room.****Tea and Coffee will be available from 10.00am. The meeting will start at 10.30am.****We need a quorum to proceed (otherwise we will have to reschedule the meeting).**

ADVANCE NOTICE 2021 – Mark your diaries!

Saturday 26th June**6th – 10th October****Sat 27th November**

Mid-year competitions

Supreme Art Awards and Expo

End-of-year competitions/social

FROM THE PRESIDENT

Hello there,

This is my final newsletter note as President for the 2020–21 year, however I have accepted nomination to continue in this role in the next year. My objective as President has been and continues to be to 'hear and do what the Society members want and raise the profile of the Society and increase the opportunities available to members'. I have enjoyed this role and appreciate the wonderful support and response I have experienced from you. I always welcome any suggestions, ideas or input into the future of the Society.

All committee positions will be voted on at the upcoming AGM. I encourage you to attend the AGM on 1 June at 10 am to support the Society. We must have a quorum of 41 for the meeting to proceed. I thank all members of the Executive, Exhibition and Programme/Competition committees who have given their time and energy to assist with organizing the activities of the Society, and welcome new committee members. Thank you for your involvement.

I welcome our new members; we have had a flurry of new members since the Expo pushing our membership to over 200 now.

The last few weeks have been busy with follow up jobs after our very successful Art Expo. Later in this

newsletter you can read the report about it. The Exhibition Team have met and analyzed each aspect of the Expo and discussed areas for improvement next time.

We farewelled Graham Baker who has departed for a new chapter in life in Melbourne with his lovely wife Gloria. We wish them well. Graham's departure leaves us with a gap in our program. The Art School has been 1st and 3rd Wednesday mornings of the month. So that we don't lose the opportunity to use these session times to learn, the Executive team have agreed that we will send out a survey by separate email to all members offering options of subject, genre and medium asking preferences for tuition. Also in the survey will be an opportunity for our experienced artists to volunteer to host a session in their preferred method of artwork. Please do participate in this survey, it will mean that we can quickly get our 'Art School' functioning again in a different format. The sessions will be open to all on a first in first served basis. A list will be available at the Art Room to register monthly with the programmed subject and tutors. The sessions will be \$5 - \$10 to cover materials supplied.

Our Mid-Year competitions are looming up on the 26 June. I encourage you to enter as many categories as you can. It is a great forum to push yourself and see just what you are capable of. At this competition we have a new trophy (the Dara Koru Trophy) for any subject and in any medium. This category is open to any member that has not been awarded a trophy previously in the Society competitions. You can still enter if you have won a Merit Award previously. Lynne Dara and her family have kindly donated this trophy to the Society. Sincere thanks to the Dara family.

There are still some outstanding membership fees. Remember to renew your membership if you haven't already done so. Have a great month, I hope to see you at the AGM.

Debbie Clarke, President

0274 961 752

debbie.clarke@landmarkhomes.co.nz

NOTICES

WELCOME TO NEW MEMBERS

We are pleased to welcome Judith Sadler, Babette Bayet, Kris Jansen and Sue Dark, who have recently joined the Society.

WELFARE OFFICER

Just a reminder, we do have a welfare officer for anyone in the club who has surgery, illness or bereavement. Please contact either Debbie Clarke or Carol Macintyre (TSA email) who will pass details on to Myra Blackstock (welfare officer). The information is handled with discretion & confidentiality.

BEREAVEMENT NOTICE – GEOFF WESTWOOD

My father (Geoff Westwood) was a member of the Society until 2016, but passed away last year. If any current or former members of the Society would like to attend, a memorial service will be held on Thursday 1 July at 2 pm (at St George's, Gate Pa and streamed on Zoom). If anyone wants to join us, could they please RSVP to me by 21 June, indicating whether they will attend in person or prefer Zoom. I can be contacted by text (027 728 8506), email (john.westwood@xtra.co.nz) or post (3 Beavis Lane, Karori, Wellington 6012). Thank you very much for your help.

John Westwood.

On behalf of our members, we would like to extend our sympathies to his family.

Executive Committee, Tauranga Society of Artists

NOTICE - Opportunity to have your own listing in CBOP Directory

Creative Bay of Plenty has extended an invitation to creatives living in Tauranga or the Western Bay of Plenty, to join the Creative Directory. This free service is an online collection where one can find, learn about and contact individual artists, organisations and venues.

Copy and paste this link to have a look at who is already listed and get some ideas about what you might like to put up. <https://creativebop.org.nz/creative-directory/>

The Creative Directory is a great opportunity for you to have a local online presence. A submission should include photos of your work, links to any social media or websites, an artist's bio and your contact details.

The Society will have their own listing. If you go ahead and create one of your own, feel free to mention that you are a member.

For more information or if you have any questions or need help, contact Sarah Whitaker via email at directory@creativebop.org.nz

Deb Clarke / Shona MacKenzie

PROGRAMME AND COMPETITIONS SUB-COMMITTEE

Our first critique was a great success with 24 members bringing in paintings to be appraised. Graham Baker gave us the benefit of his experience and talked about the techniques and composition of each painting. He highlighted how depth of perspective could be achieved with fading colour and reducing the size of some objects or animals. Graham rounded off the session by demonstrating how to apply weak washes using retardant or thinners and then by using his favourite big brushes, the artist is able to "lift" the finished work by brushing over it with a dry brush to blend or lighten.

Our next Critique session will be on the 6th July so if you are wanting to get some helpful advice on your painting bring along your art to the Art Rooms at 1.00 pm – 3.30 pm. Everyone is welcome.

Upcoming tutorials

Garry Osborn will conduct a workshop, "Chaos to Symmetry," at the Art Rooms on Friday 18th June (1.00pm – 3.00pm), Saturday 19th (10.00am – 3.30pm) and Sunday 20th (10.00am – 3.30pm). It will be an interesting tutorial with Garry's great sense of humour and informative views on art history.

Don't miss this one! Please put your name on the "Expression of Interest" form in the foyer.

Miriam Ruberl will hold a watercolour workshop covering tricks and techniques of this wonderful medium. The workshop will be held on 2, 3 and 4th July. More details and Expression of Interest form to come shortly.

A wonderful Pastel workshop in November (which already has limited places) available. Julie Greig from the South Island is a master pastelist. Contact Mary McTavish who has filled most of the spaces from her Pastel Class.

Check out the foyer for the details on these workshops. Remember they are to be held in our own art space, no travel or accommodation costs to another centre or city. The prices are very reasonable considering the above - save those pennies and come learn some new stuff.

Lyn Watts, Malcolm Drysdale, Jenny Roberts, Janet Fox, Carol Tanner and Wendy Fullerton.

MID-YEAR COMPETITIONS

We will be holding our mid-year competitions on **Saturday 26th June**.

We encourage you to enter a painting for the following mid-year competitions.

If members would like to review the regulations for each category, please look in the May newsletter. All members entering the competitions are asked to bring a plate for a fabulous morning tea and get-together while the judging is taking place.

- | | |
|---|--|
| 1. Best Still Life | Richard Perkins Memorial Trophy |
| 2. Best Landscape (incl. Cityscape) | Eric Hussey Cup |
| 3. Best Seascape | Eric Hussey Cup |
| 4. Best Portraiture | Thelma Graham Plate |
| 5. Best Pencil Drawing (graphite pencil) | Joan Lushington Sketch Trophy |
| 6. Best Black and White - (pure white & pure black or a mixture of the two) | Reg Chalmers Memorial Rose Bowl |
| 7. Best Mixed Media | Dale Mitchell Memorial Cup |
| 8. Best Figure Study | Ray Thompson "La Vie" Trophy |
| 9. Best Pen & Ink (including Light Wash) | McTavish Trophy |
| 10. Any Medium and any Subject (Members eligible: any member who has not won a Trophy at Tauranga Society competitions previously). | Dara Koru Trophy |

Please bring your paintings to the Elizabeth Street Community Centre 9.00am – 9.30am.

Morning tea and entertainment will be available at the Society rooms during the judging.

The presentation of trophies at the Community Centre will commence at 11.30am followed by viewing of the paintings. Artists may collect their paintings after 12.30pm.

Cover your name on the front of the artwork but have a swing tag with your name, title and category you want to enter, on the back.

LIBRARY NEWS

There have been a number of books donated to the library covering most media. Thank you to everyone who donated books including Janice Pilbrow. All your contributions are appreciated. The Society does not have a watercolour class as such at present but with the books being newly donated there are instructive editions especially for beginners, exploring and fun.

In the April newsletter, CDs were reviewed of Helen Van Wyk. Three of her books have since been donated to the library, two on oil painting and one on colour.

“To see we must forget the name of the thing we are looking at” Claude Monet

There are many books in the library with particular reference to light, shade, mood and atmosphere in watercolour, but could effectively apply to any media of choice. Different kinds of light may tell us why a painting has been captured, such examples: -

- a) Sunset - often chosen for their reactive simplicity
- b) lamplight - depending on how it is projected for luminosity
- c) reflected - put colour and life into shadows
- d) weather - atmospheric possibilities
- e) full sunlight - creating bright colours, deepest shadows

- 1) Painting Light And Shade Patricia Seligman (118)

Patricia Seligman is a freelance lecturer, journalist, artist and prolific author of art books. This book is beautifully detailed in control of light and shade, step by step demonstrations with specific techniques. Included in the edition are examples of paintings by professional artists, accompanied by tonal sketches.

- 2) Painting the Many Moods of Light Rachel Wolf (16)

Rachel Wolf, a freelance author of fine arts, portrays nine artists sharing their diverse fascination with light to invoke moods and mystery.

- 3) Paint Watercolours That Dance with Light Elizabeth Kincaid (15)

Elizabeth was a graphic designer doing freelance illustrations and teaching watercolour privately. She writes inspiringly about composition (including photos used), colour, light and shade. It is a comprehensive book to explore with tips on colour mixing and glazing.

NB: Please sign out any books you wish to borrow.

Audrey Naismith, Librarian

FACEBOOK & INSTAGRAM



<https://www.facebook.com/taurangaartsoc>



Our Instagram id is @taurangaartsoc

Facebook Update

Lou Agas has created a great video for the Portraiture session and is working hard on a new one for our Wednesday afternoon session. It's great to be able to give people an insight into what we do as a society.

Don't forget if you are involved in any exciting new projects to let me know so I can promote them for you.

Thanks, Christie christiecramerart@gmail.com

Christie Cramer, Facebook & Instagram Admin

Garry Osborn workshop “Chaos to Symmetry”

Garry Osborn will hold a workshop on Friday 18th, Saturday 19th and Sunday 20th June.

Workshop hours:

Friday: 1.00pm to 3.00pm - Proposed 2 hours to meet and greet, set up and leave spaces ready for a fresh start on Saturday.

Saturday: 10am to 3.30pm

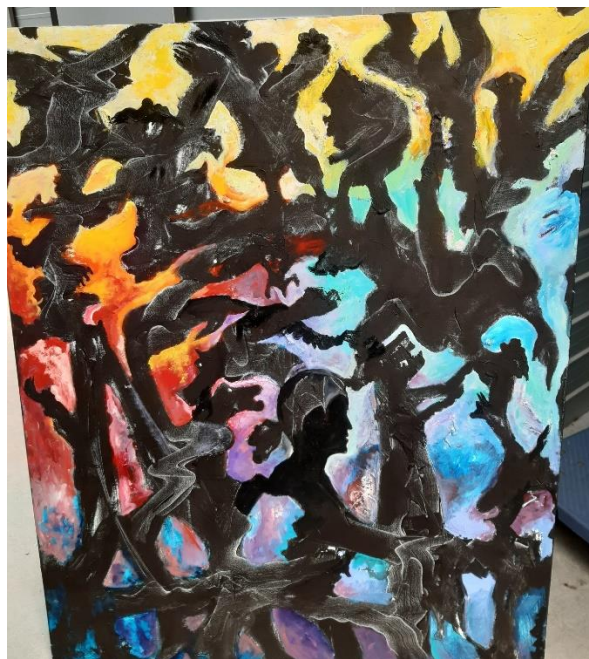
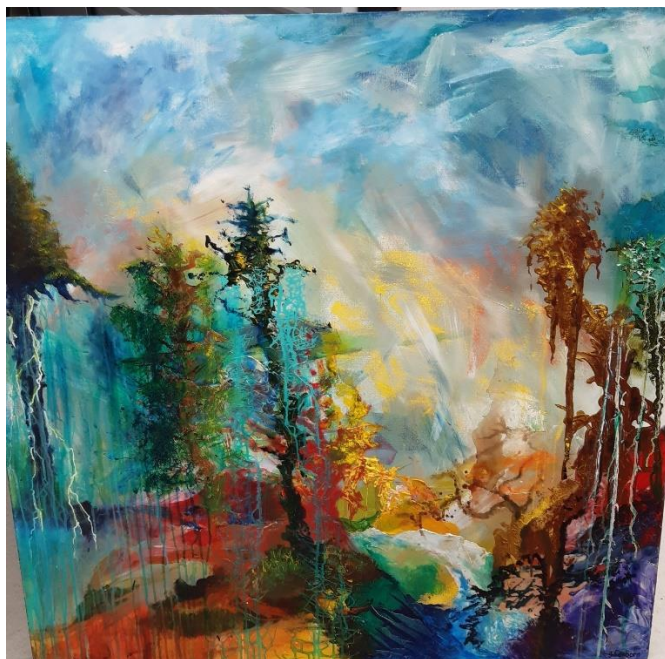
Sunday: 10am to 3.30pm.

As this workshop is limited to twelve participants be in early to be sure of a place.

Build a picture from your own collection of subconscious images. Explore communicating by painting in an abstract mode or by going totally non objective. Learn to deal with spatial relationships, colour as form and find the unity among all your ideas. You could be the new Kandinsky or Mondrian.

Cost is \$120 for the weekend. Bring your morning tea and lunch and materials (in mediums you wish to work).

You will learn the how to and why to in Acrylics - with some art wisdom from a very entertaining teacher. There is an expression of interest in the foyer. Please fill in the form if you are interested in attending this exciting workshop.



ARTIST OF THE MONTH: LYNNE DEAN

"My name is Lynne and I am an artist."

At a young age, my talent as an "artist" consisted only of copying Donald Duck, Goofy, Mickey Mouse and all the cartoon characters that Disney World possessed. I went through school with challenges in the typical subjects, but the art classroom was my favourite.

I never classed myself as "good", but art was something I really enjoyed. Around 15 years ago I enrolled in an evening, eight-week watercolour class at the Lower Hutt Art Society. I loved it so much, I enrolled again and again (in the same class). Eventually I would sit at the end of the table and do my own thing while enjoying the company of others. If it were not for the tutor at that time, I would not be where I am today. Slowly, I found mediums that I enjoyed, pencil (graphite) and coloured pencil. My aim was to draw, use tonal values but in doing so, create no visible pencil change that the eye could see. I am still practicing! As time went on, I realised that my specialist and most preferred field was in the detail and ultra-fine art.

It has only been the past five years that I have delved in pastels, whether they be soft, hard, pan pastels or pastel pencils and to use them to create the best, most detailed fine work that I can. Again, I am still learning and improving.

Apart from the water colour classes and the occasional workshop that I have attended I am self-taught. I have two websites that I closely follow – 1) The Virtual Instructor and 2) Jason Morgan. Both artists cover multiple mediums. These are two websites I have followed for years. I would and still do put forward my artwork for competitions and critique on these sites. This is largely how I strive to improve. My favourite subjects to draw are animals whether they be wildlife, birds, dogs, cats etc. I have accepted commissions but mostly I enjoy doing my own work, in my own time and in my own way.

As a member of the Tauranga Society of Artists, I regularly attend the Tuesday night "arties" group. I find it is important to be surrounded by like-minded artists and thoroughly enjoy these evenings. I also have family and friends who provide support and continue to push my confidence. Otherwise, I am sure I would still be hiding my artwork behind closed doors. I love what I do and if it can provide joy to someone else (including myself) then that is what I will continue to do.

I am now proud to say – "my name is Lynne and I am an artist".



Artist of the month is an opportunity for members or a group to have 5 pieces of their artwork hung for display in the Society rooms for a month.

Anyone can participate. We strongly encourage all artists to take this opportunity to exhibit their artwork. We are currently looking for artists to display their work from August onwards. If you would like to have your work on show in the future (don't be shy), **contact Alison Underwood by email at taurangaartsociety@xtra.co.nz**

ART IN THE PARK & ON THE STRAND



NO COSTS – NO COMMISSION

Great opportunities for members of the Tauranga Society of Artists Inc to display & sell your art, mix with your fellow artists, and interact with the public – local, from other areas of New Zealand, and overseas.

DATES FROM JUNE 2021 TO DECEMBER 2021

MONTH	ART in PARK (SATURDAYS)	ART on STRAND (SUNDAYS)
JUNE	SATURDAY 12 th and 26 th	SUNDAY 6 th and 20 th
JULY	SATURDAY 10 th and 24 th	SUNDAY 4 th and 18 th
AUGUST	SATURDAY 7 th and 21 st and 28 th	SUNDAY 1 st and 15 th
SEPTEMBER	SATURDAY 11 th and 18 th and 25 th	SUNDAY 5 th
OCTOBER	SATURDAY 9 th and 23 rd and 30 th	SUNDAY 3 rd and 17 th
NOVEMBER	SATURDAY 13 th and 27 th	SUNDAY 7 th and 21 st
DECEMBER	SATURDAY 11 th and 18 th	SUNDAY 5 th and 19 th

PLEASE NOTE:

- **Set up time** is from 8am and **end time** is before 5pm.
- If Council makes any changes to the above dates, you will be advised by group email.

SESSION LEADERS

- Monday am/pm, 1st and 3rd week -- **PASTELS** -- Mary McTavish, jhmemcts@gmail.com
- Monday am/pm, 2nd and 4th week -- **DRAWING** -- Audrey Naismith, 544 3068
- Tuesday am -- **OPEN STUDIO** -- Greg Nicie, gregorynicie@gmail.com
- Tuesday evening -- **OPEN STUDIO** -- Steve Cordery, 027 510 6669
- Wednesday am, 2nd and 4th week -- **PORTRAITURE** -- Robin Purllant, rpurllant@gmail.com
- Wednesday pm -- **OPEN STUDIO** -- Richard Fenn, 577 1644 or 027 245 1741
- Thursday am -- **OPEN STUDIO OILS** -- Karen Pritchard, 544 6574 or 021 197.3737
- Friday am, 1st and 3rd week -- **LIFE DRAWING** -- Tanya Bamford King, 021 271 2493

Members are welcome to attend advertised sessions

PORTRAITURE

Basic Guidelines for Drawing the Face looking up and down.

When drawing a portrait that is looking up or down the same schematic lines should be drawn first as in **A***. However this time these basic set-up lines are curved.

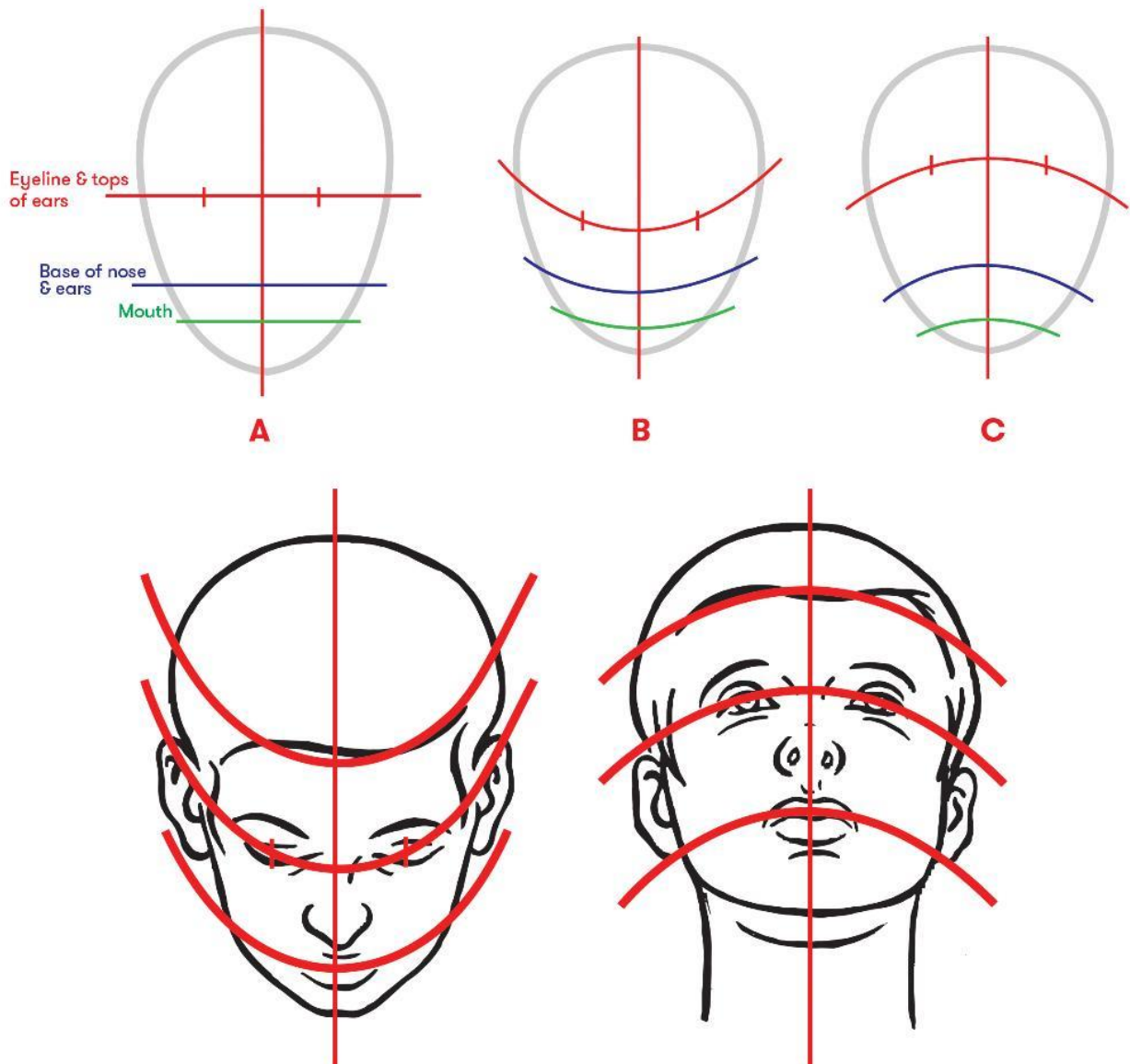
They curve up if the face is looking down (**B**) and curve down if the face is looking up (**C**).

A more satisfactory drawing/likeness will be achieved if these lines are used to set up your drawing before starting to draw facial details such as eyes, lips and ears.

Use these guide lines to establish the relative positions of eyes, lips and ears etc. Start with lightly drawn strokes and dots, strengthening them as they become more accurate.

Once you are satisfied with their accuracy start to draw in the facial details.

These lines should be retained during the duration of your drawing. They are a constant reminder of the curvature of the whole face



* See Sheet 1 **Basic Guidelines for Drawing the Face**

“Photography is an immediate reaction, drawing is a meditation.” Henri Cartier-Bresson

For the first portraiture session of the month, we had lots of new faces, all keen to take on the challenges of this demanding but rewarding discipline. My approach to the start of drawing a portrait would come as a surprise for many of the members that attended. I encourage careful observation, starting with accurately positioning the main facial features and drawing only what you can see. This approach may seem very technical but with practise and working slowly this important planning stage ultimately leads to a more accurate drawing.

During the first half of the session, I also focused on drawing portraits when the head is looking up and down. These angles are challenging, even for the best portrait artists! To compliment this, I also supplied another explanatory sheet.

After my introduction members split into groups of four. One member posed while the other three drew their portrait, concentrating on what I had proposed during the first half of the session.

Robin Purllant, convenor

PASTEL SESSIONS

Hi everyone,

We have been having good numbers of attendees at the Pastel Sessions lately and are grateful for the extra Mondays in the months with 5 Mondays. We seem to get a lot of work done – all encouraging and assisting each other as necessary. Brian Frank has brought us a year's worth of Pastel Artist International magazines which I am sharing around the group so you should all have the opportunity to view the entire catalogue.

Brian has also been busy at home and sorted through a lot of canvasses that he and Adele have bought over the years and now no longer need. He has offered them to us at half the prices that he paid for them and I list them below at the price Brian would like for each one: -

Das Exhibition	10x30" x 2	@ \$8.00 each
"	" 10x20" x3	@ \$6.00 each
"	" 8x16" x6	@ \$6.50 each
"	" 6x12" x3	@ \$3.00 each

Steve's Stretched Canvas (Tanji's Art Supplies)

"	"	20x24" @ \$24.00
"	"	12x36" @ \$35.50
"	"	12x30" (x 4) @ \$32.00 each
"	"	10x14" @ \$16.00
"	"	8x6" @ \$16.00

Master Art Exhibition Stretched Canvas	18x36" @ \$21.00
Monte Marte Premium Cotton Duck	16x14" (x 2) @ \$7.50 each

If you contact Brian direct you can sort out payment and collection/delivery between you. Brian's contact details are brianmfrank.bf@gmail.com 07 575 5766.

He is hoping that a little of Adele's love, inspiration and support will go out with each canvas.



Happy pastelling.

Mary McTavish, Pastel Convenor

PANZ Rep for BOP

PORTRAITURE THURSDAY SESSION WITH BEV MOORE

The group is working well with much creative energy and laughter. We have at least two models and a number of demonstrations each session. This week it was focusing on the eyes and next week we'll be working in colour pencil.

We have invited friends and members of the Society to be models at the same time they can see how the session runs and join if / when there's a space. If you are interested in being a model / watching demonstrations then please get in touch with me at bev.moore@xtra.co.nz



Bev Moore, convenor

WEDNESDAY AFTERNOON SESSION

I think that every artist should adopt a style that they find most rewarding for them. Therefore, it is important not to follow rules like not using black or white, as black and white might be the very colours that you might like to use most of all. The rule that people should not use black is only for those who like to use other than black in their art. Some of the greatest artists have used black. On the other hand some great artists have never used black. It is entirely up to the individual not a rule that we should conform to.

There are no hard-and-fast rules about art and although from time-to-time people might try and portray the idea that sticking to certain rules will be good for everybody I think that this is not a good idea. Therefore,

people should experiment trying different media and ideas to achieve the sort of result that you are happy with.

Richard Fenn, convenor

APRIL ART EXPO 21–25 APRIL 2021 REPORT

Entrants: 65 artists

Artworks: 388 entered - 5 withdrawn = 383 hung

Tiny Art: 83 by 32 artists

Sold: 90 Artworks (including 21 Tiny Art sold)

Attendance: including Gala Opening 1550

Advertising/Events and Community Notices/Signage: No radio advertising used. New road signs worked well.

Transport screens and set up: Check in went smoothly, great turn out of helpers. Hanging completed in record time. New layout providing more distant viewing of large artworks was well received. We recorded a time lapse of the set-up day. View the whole set up in 38 seconds on our Website (once it is uploaded).

Gala Opening: Attended by 200 members and guests who were welcomed on a red carpet and enjoyed a glass of champagne whilst viewing the artwork. Opening officiated by Mary Dillon (Patron of the Society).

Sales: 90 paintings were sold and over \$2000 of cards and prints were also sold.

Raffles: Prizes were donated from Bethlehem Paper Plus, Brookfield New World, Harrisons Frames, Farmer Auto Village, Heartland Bank, Warehouse Frazer Cove and a Bruce Hutchison painting.

Live Art: 9 artists participated with 5 painting on Sunday.

Floral Art Group: Our guest exhibitors supplied 12 beautiful arrangements.

Tiny Art: 83 were hung in area adjacent to cards. These were well received.

Bethlehem Potters: Great display of pottery by our guests.

People's Choice Award: Two prizes of Gordon Harris Gift Cards were donated by Gordon Harris

1st place - Art Capener – "South Westland" (\$300 voucher)

2nd place - Jen Brotherton – "Alone with the waves" (\$200 voucher)

3rd place: Bruce Hutchinson – "Lake Brunner West Coast"

4th equal: Brendon O'Farrell – "E Toru Nga Manu" and Deb Clarke – "Summer's Glow"

5th place: Lou Agas – "A Pleasant Stroll"

6th place Natalya Doudell – "Cellolicious"

Trustpower: Two Gazebos worked well, one at the entrance and one over the sales table.

Music/sound: Guitarist, Michael Lee played at the Gala Opening and for some periods each day.

Microphone and music were connected to the PA system and was great for speeches and music played when the guitarist was not in attendance.

Coffee Cart: 'Two peekin ducks' - Girls did a good job.

Set up Day lunch: Greg did a good job on the sausage sizzle for volunteers.

Collecting purchased art by buyers: This worked smoothly.

Artists picking up unsold work: Two desks worked well with a person on the in-door and the out-door.

Packing down: All went well and completed in 1.5 hours. Excellent job done by members helping.

If you would like the contact details for purchasers of your artwork or your Peoples Choice vote numbers, Contact me by phone or email and I will give them to you. Debbie.clarke@landmarkhomes.co.nz or 0274 961 752

Debbie Clarke, Exhibition Subcommittee Coordinator

PROGRAMME: **Note:** Competition Day is on Saturday 26th June, 2021

JUNE 2021	
Monday Morning	
7	Pastels - Mary McTavish - Convenor
14	Drawing - Audrey Naismith – Convenor
21	Pastels
28	Drawing
Monday Afternoon	
7	Pastels
14	Drawing
21	Pastels
28	Drawing
Tuesday Morning	
1	AGM to be held in the Elizabeth Street Community Centre across the road starting at 10.30am.
8	Open Studio Any Medium – All welcome – Greg Nicie
15	Open Studio
22	Open Studio
29	Open Studio
Tuesday Afternoon	
1	
8	Exhibition Team Committee Meeting at the Art Rooms 1.00pm
15	
22	
Tuesday Evening	
1	Practical Art (Any medium) All welcome - Steve Cordery
8	Practical Art
15	Practical Art
22	Practical Art
29	Practical Art
Wednesday Morning	
Rooms open 9.30 – 12.00 noon	
2	
9	Portraiture with Robin Purllant - Cost \$5 per person
16	
23	Portraiture - no charge
30	
Wednesday Afternoon	
12.00 – 4.00	
2	Open Studio Acrylics and other medium – Help offered if needed - Richard Fenn
9	Open Studio
16	Open Studio
23	Open Studio
30	Open Studio
Thursday Morning	
9.30 – 12.00	
3	Oil Painting plus other medium - Karen Pritchard
10	Oil Painting
17	Oil Painting
24	Oil painting
Thursday Afternoon	
1.00 – 4.00	
3	Portrait Class with Bev Moore \$120 – 6 weeks
10	Portrait Class
17	Executive Committee Meeting at the Art Rooms 1.00 pm
24	Portrait Class
Friday Morning	
9.30 – 12.00	
4	Life Drawing. Cost \$10.00 with Tanya Bamford King
11	U3A Programme & Competition Committee Meeting 1.00 pm
18	Life Drawing Cost \$10.00 WORKSHOP – Gary Osborne 1.00–3.00pm “Chaos to Symmetry”
25	U3A