



ART • PEOPLE • PASSION

NEWSLETTER & PROGRAMME

APRIL 2021

LOCATION: 171A Elizabeth St. West

PHONE: 07 5716859

EMAIL: taurangaartsociety@xtra.co.nz

FACEBOOK: [Tauranga Society of Artists](https://www.facebook.com/TaurangaSocietyofArtists)

WEBSITE: www.taurangasocietyofartists.org.nz

2020/2021 COMMITTEE

President: Debbie Clarke 027 496 1752

Vice President: Adrian Muller 027 542 2167

Secretary: Carol King 07 576 1891

Treasurer: Lynn Webb 027 945 0275

Newsletter Editor: Alison Underwood 021 2500 504

John Campbell 021 663 355

Kinsa Hays 021 864 654

Wendy Fullerton 027 330 3698

Jitske Schokking 07 576 5894

ADVANCE NOTICE 2021 – Mark your diaries!

21st – 25th April

Tuesday 1st June

Sat 26th June

6th – 10th October

Sat 27th November

Art Expo

AGM

Mid-year competitions

Supreme Art Awards and Expo

End-of-year competitions/social

FROM THE PRESIDENT

Hello there, it's hard to believe we are heading into the fourth month of 2021. I hope you are feeling inspired and have your paint brushes dancing!

It is now just over three weeks until the opening of our Art Expo at the Tauranga Boys College Gymnasium. This has proven to be a great venue. At our last expo there in October 2020 we had 2000 visitors and sold over 100 pieces of artwork.

In our April Expo we have invited two other groups as Guest Exhibitors that are complementary to our artworks: Tauranga Floral Art Group who created a wonderful display in October 2020, and the Bethlehem Potters Club. The People's Choice Award will be held again, and I am delighted to announce that this Award is now sponsored by Gordon Harris Art and Graphic Store. The winner will receive a \$300 voucher and runner up a \$200 voucher for the Gordon Harris Art and Graphic Store. It is great to have New Zealand's premier art supply store as a supporting sponsor.

Gordon Harris has also offered a 10% discount on purchases to all Society Members instore, phone orders and online. (To receive your discount on online purchases, write this in the comments box: "Please apply my 10% discount as a Tauranga Art Society Member").

Later in the year there will be an invitation extended to attend a demonstration/presentation by Gordon Harris of art materials. This will be hosted by artist Evan Woodruffe at the Art Room.

Whether you are exhibiting or not, please help to promote the Expo by sharing promotional flyers that will be posted on Facebook and Instagram to your social media. Flyers are available in the entry pack to put in letterboxes by entering artists. If you would like a bundle to distribute or a poster to hang in your workplace

or community, contact me and I will arrange to get you some.

On a final note, I know that there are a number of our members facing health challenges and family issues at present. Take care of each other and if you know of someone who needs extra support, contact me directly.

Have a great month and I look forward to seeing you at the Expo.

Debbie Clarke, President

0274 961 752

debbie.clarke@landmarkhomes.co.nz

NOTICES

WELCOME TO NEW MEMBERS

We are pleased to welcome Anne-Marie Andrews and Suzanne Smith who recently joined the Society.

WELFARE OFFICER

Just a quick notice to tell people that we do have a welfare officer for anyone in the club who has surgery, illness or bereavement. Please contact either Debbie Clarke or Carol Macintyre (email administrator) who will pass details on to Myra Blackstock (welfare officer). The information is handled with discretion & confidentiality. Also, a reminder to club members that while close friendships come about in the enjoyment of doing art together, people are still entitled to their privacy and dignity in their lives.

Executive Committee, Tauranga Society of Artists

FACEBOOK & INSTAGRAM



<https://www.facebook.com/taurangaartsoc>



Our Instagram id is @taurangaartsoc

Facebook Update

Firstly, our Expo is coming up this month, so I would love to receive some examples of work you are entering to add to our social media promotion of our event. Send them to christiecramerart@gmail.com

Secondly, please, please once I have set up our event page could you share it with your friends and family via Facebook or Instagram and to any online groups you may belong to. This is the best way to make people aware we are having an exhibition; word of mouth is always the best form of advertising for any event. Last year we had over 2000 visitors, our event is popular, and I'm sure your friends and family will appreciate knowing it is coming up.

Thanks, Christie christiecramerart@gmail.com

Christie Cramer, Facebook & Instagram Admin



You are invited to Tauranga's largest ...

ORIGINAL ART EXPO

Tauranga Boys' College Gymnasium
Entrance: corner of 14th Avenue & Devonport Road
Plenty of Parking close to venue

Thursday 22nd - Sunday 25th April 2021

People's Choice Award
Come and vote for your
favourite painting

SPONSORED BY



Thursday 22nd April 9.30am - 5.00pm
Friday 23rd April 9.30am - 5.00pm
Saturday 24th April 9.30 am - 5.00pm
Sunday 25th April 12.00 - 5.00pm

Closed ANZAC Morning

All artwork may be purchased
cash/eftpos/cheque available

•Painting and Drawing demonstrations each day •Tiny Art category



With invited exhibitors
Tauranga Floral Art Group
and
Bethlehem Pottery Club



PROUDLY SPONSORED BY



paperplus
BETHLEHEM



FARMER
AUTOVILLAGE®
We Sell Cars. But we love drivers.

HARRISON FRAMES

HEARTLAND
BANK



NEW WORLD
Brookfield

thewarehouse
FRASER COVE

BUNNINGS
warehouse

AJ'S
Fraser Cove

LIBRARY NEWS

DVDs - Two DVDs to mention are by the late Helen Van Wyk:

1) THE WONDERFUL COLOR OF WHITE (12)

Helen Van Wyk was a successful oil painter of portraits and still life, also producing a number of books including colour recipes. With demonstrations Helen shows how to paint the colour white to enhance the glow in oils, its usefulness and a guidance with light and shade. The still life in this tape is a white jug modeled on a white embroidered cloth. The second part of the video demonstrates snow – a winter scene of an old red barn.

2) KISSING AND WARM COLORS (11)

This DVD emphasizes basics in giving the illusion of reality. The arrangement is of citrus, blending yellow and orange with white.

BOOKS

1) COLOUR AND LIGHT IN OILS – by Nicholas Verrall (65)

This contemporary artist introduces himself: “reward in painting is being true to yourself”, particularly from his motivating guide to produce stunning oil effects of light and colour bringing a painting to life. Examples of his work produced in his book are colourfully bright, cheerful and at times bordering on the abstract. His work process item is a good guide appropriate for any media.

2) COLOR SECRETS FOR GLOWING OIL PAINTINGS – by Douglas Purdon (22)

An entirely different interpretation of choices. How we each see colour, sharing secrets for conveying mood, atmosphere and making colours appear brighter and more intense. The author demonstrates his techniques in twelve painting projects with oil paint choices, brushes used, tips and tricks. His detailed colour palettes are instructive, as is his list of equipment, the fixing of problems and detailed scenic demonstrations.

Audrey Naismith, Librarian

SESSION LEADERS

- Monday am/pm, 1st and 3rd week -- **PASTELS** -- Mary McTavish, jhmemcts@gmail.com
- Monday am/pm, 2nd and 4th week -- **DRAWING** -- Audrey Naismith, 544 3068
- Tuesday am -- **OPEN STUDIO** -- Deb Clarke (for now), 027 496 1752
- Tuesday evening -- **OPEN STUDIO** -- Steve Cordery, 027 510 6669
- Wednesday am, 1st and 3rd week -- **ART SCHOOL** -- Graham Baker, 022 488 0786
- Wednesday am, 2nd and 4th week -- **PORTRAITURE** -- Robin Purllant, rpurllant@gmail.com
- Wednesday pm -- **OPEN STUDIO** -- Richard Fenn, 577 1644 or 027 245 1741
- Thursday am -- **OPEN STUDIO OILS** -- Karen Pritchard, 544 6574 or 021 197.3737
- Friday am, 1st and 3rd week -- **LIFE DRAWING** -- Tanya Bamford King, 021 271 2493

*Members are welcome to attend advertised sessions
but bookings are required for Painting School and the first Portraiture session each month*

ART IN THE PARK & ON THE STRAND



NO COSTS – NO COMMISSION

Great opportunities for members of the Tauranga Society of Artists Inc to display & sell your art, mix with your fellow artists, and interact with the public – local, from other areas of New Zealand, and overseas.

DATES FROM APRIL 2021 TO DECEMBER 2021

MONTH	ART in PARK (SATURDAYS)	ART on STRAND (SUNDAYS) Please note change
APRIL	SATURDAY 3 rd and 10 th and 24 th	SUNDAY 18 th
MAY	SATURDAY 8 th and 22 nd	SUNDAY 2 nd and 16 th
JUNE	SATURDAY 12 th and 26 th	SUNDAY 6 th and 20 th
JULY	SATURDAY 10 th and 24 th	SUNDAY 4 th and 18 th
AUGUST	SATURDAY 7 th and 21 st and 28 th	SUNDAY 1 st and 15 th
SEPTEMBER	SATURDAY 11 th and 18 th and 25 th	SUNDAY 5 th
OCTOBER	SATURDAY 9 th and 23 rd and 30 th	SUNDAY 3 rd and 17 th
NOVEMBER	SATURDAY 13 th and 27 th	SUNDAY 7 th and 21 st
DECEMBER	SATURDAY 11 th and 18 th	SUNDAY 5 th and 19 th

PLEASE NOTE:

- **Set up time** is from 8am and **end time** is before 5pm.
- If Council makes any changes to the above dates you will be advised by group email.

A RESIGNATION LETTER FROM MEMBER LENORE SAFI-CHRISTIE

I wish to let those members of the Society who remember me that I am leaving Tauranga, I am moving to Hamilton to be nearer family. Consequently, I offer my resignation. I was in my early sixties when I joined the Society and was quite active despite suffering a number of physical injuries earlier in my career. I became Vice President during the time my good friend Gorgina Don was President, and I took on the club newsletter for a couple of years.

I have made many friends over the years and I also spent about 16 years teaching beginners acrylics. I did a short stint, maybe a couple of years at Tauranga Boys High before the Government stopped the (unnecessary) after school classes. Shortly after I was asked to teach at the Greerton Bible Church. I really enjoyed my time there and left after about 14 years when I found the regular trip from Freedom village, out at Golden Sands Drive, over to Greerton became quite daunting.

Unfortunately, since moving out to Papamoa and losing Dear Terry, whom many of you knew, I have not been able to make it back to regular attendance. I am in my eighties now and just want to thank the Society for all the great times I have enjoyed over the years. The teachers, the trips we had, the exhibitions, the celebrations, the sharing, the Friday classes that started with a glass of wine! The 'Naughty Girls' exhibition, the launch of my 'Virginia' book and paintings, and the fun and friends at Art in the Park. Far too many things to remember here but always carried in my heart.

Thank you everyone, especially those who were in 'my time'. I still dabble a little and actually do still have things I would like to try and things I would like to do. I will miss the friendship / fellowship of the small group I meet with once a month for a time of sharing and stimulation. Things have evolved as they always will and must, and I have been proud to call myself a member of the Tauranga Art Society. God Bless you all. THANK YOU.

ARTIST OF THE MONTH: MONDAY DRAWING GROUP

Regular members of the Drawing class are showing a variety of art for the month of April in the Society art rooms.

Artist of the month is an opportunity for members or a group to have 5 pieces of their artwork hung for display in the Society rooms for a month. Anyone can participate. We have an artist for May and are currently looking for artwork for the rest of the year. If you would like to have your work on show in the future (don't be shy), **contact Alison Underwood by email at taurangaartsociety@xtra.co.nz**

PORTRAITURE

“One must always draw, draw with the eyes, when one cannot draw with a pencil” Balthus

We were back to our usual number of keen portrait artists for the first session of the month. One of the Society's members, Myra Blackstock, was our model which was appreciated by everyone who attended this lively session.

This year I am introducing some innovations in the way our models are seated and the way in which we set about our drawings. It is always beneficial to occasionally approach drawing and painting from a different perspective. This helps in our understanding of shape and form, which is so important when translating 3-dimensional objects onto paper.

This year one of my new approaches is to position our model in the centre of the room. This will enable members to draw not just the face from the front, but also obliquely from the sides and the back of the head as well. The back of the head, with no facial features showing, is very challenging to draw. One member did a very sensitively drawing of Myra from this very angle - well done Nigel Wilson.

For new members who are not confident about portrait drawing, I have produced a series of basic guidelines which are available when you come along to our sessions.

Basic Guidelines for Drawing the Face

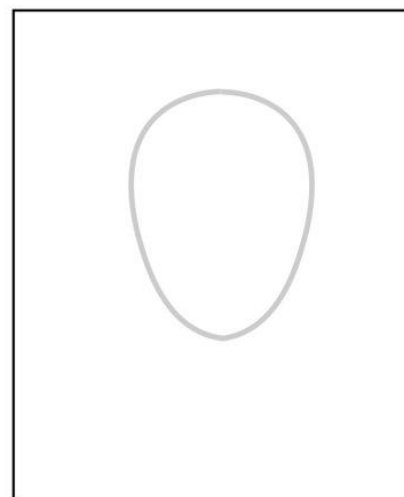
1 Proportions

To achieve a "likeness" in your finished drawing, it is essential to start with accuracy in the positioning of the eyes, nose, lips and ears etc. Do not try and draw these until you have established their exact position and parameters such as width of the mouth and eyes, length and width of the nose etc.

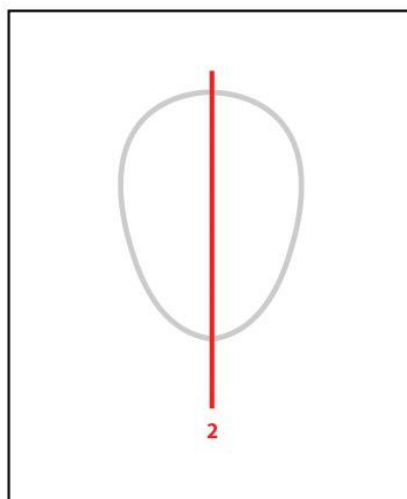
It is important to note that the proportions I have outlined here are generalised. Exact proportions will vary from model to model - that is why when drawing a portrait accuracy in observation is the key.

Always draw lightly to begin with and do more looking than drawing. If you are close to the model measuring can be a tremendous help. Establishing the exact location of the eyes, particularly the pupils is key. So many drawings are let down by eyes not being on the same line and pupils not positioned accurately.

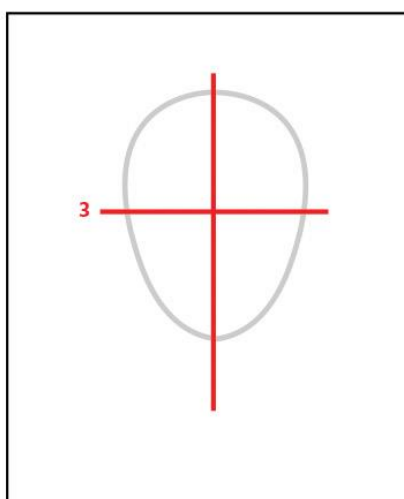
These proportions are fine if you are looking at the model from the front. However when drawing a portrait from other angles, perspective comes into play and I will be addressing that issue in Sheet No 2.



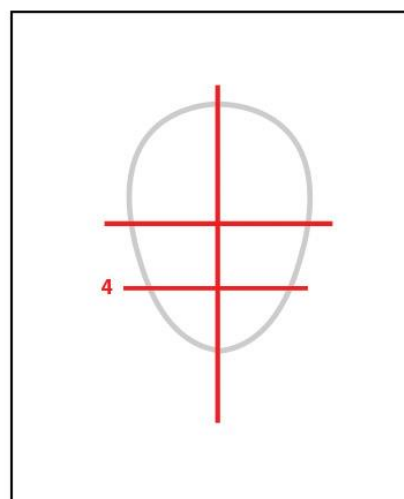
1 Draw an egg shape, narrower at the base - this will become the chin.



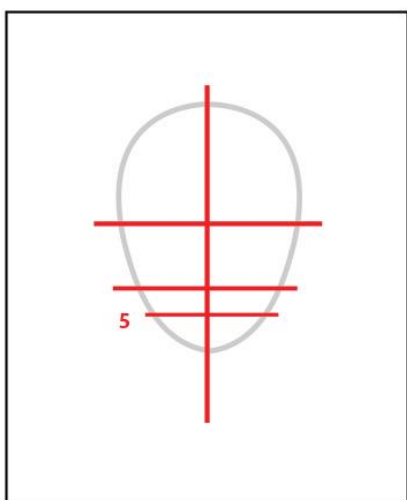
2 Draw a line vertically through the centre of this egg. (This line will make sure the nose and mouth line up correctly)



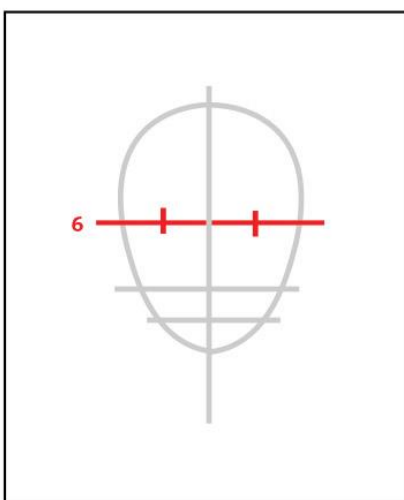
3 Draw a horizontal line about half way down the egg and vertical line. (This will make sure the eyes and tops of the ears line up).



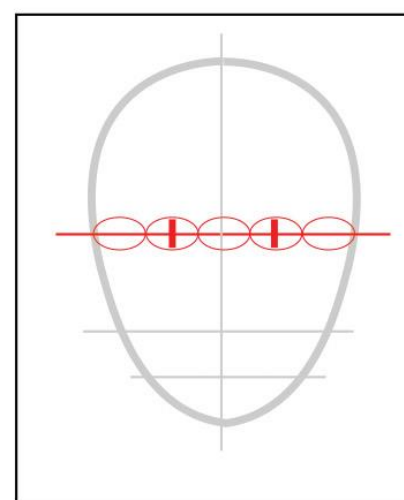
4 Half way between the eye line and chin draw another horizontal line. This is for the base of the nose and bottom of the ears.



5 A third of the way down from line 4 draw another line - this is where the mouth will go.



6 The next step is to **accurately** position the centre of the eyes. (Once established, the distance between the pupils will be your accurate reference guide).



7 Draw the eyes with their corners and pupils on the eye line. To make sure the eyes are the correct size, you should be able to fit five across the width of the head.

PAINTING SCHOOL

Painting School: 1st and 3rd Wednesday mornings of each month. (Sessions are fully booked.)

Session news:



As you can see, I didn't have to work very hard to encourage my painting group to relax and take a light hearted approach to their work. After all art is meant to be fun.

This group has proven flexible enough to accept what has occurred unintentionally and confident enough to correct mishaps while boxing on during the break between sessions. If anyone has been away or not sure, I have made sure they won't be left behind.



Above: All good, same copy, yet every painting different. I was very pleased to see how quickly everyone adapted and applied the layering, texturing and blending techniques from the first painting to this one. A whole bunch of problems disappear when we feel free to express ourselves through our paintings using simple techniques that are easy to understand.

We have just completed the second painting and moved on to the third in the series. A portrait and once again off to a good start. It is all about building up tonal layers. Blending and merging them softly into the surrounding colours with a technique we borrowed from the oil painters and adapted them to acrylics.

Those few that went too dark with their tonal washes, have been shown how to get back on track. Most however are working from light to dark and will be detailing at the next session if they haven't already done that at home.

Below: a few photos, big steps apart. But they will give you an idea what we are up to.



We are moving very quickly through the programme and the group are keeping up. I must admit I am very pleased we managed to cover so much ground in such a short time. Our next session is on Wednesday the 31st of March. We will go over the portrait to make sure everyone is confident with the techniques. Then we will start the fourth painting.

Well done everyone.

Graham Baker, convenor

PASTEL SESSIONS

We are all delighted that the Executive Committee has decided to reinstate the TSA Critique Sessions. I know that members thought very highly of these sessions when we used to run them (in the old days). The format seems to be slightly different but we do wish the Committee success with this proposal and hope that members will support the event once it gets going later in the year. It will be a session worth attending.

It was good to see Brian and Dale back with us again as well as Maxine after a period of absence. We appreciate the time that Maxine gives so willingly to our members when she is supposed to be doing her own work at the regular sessions. We did have a workshop planned for the month of March but time overtook us and we hope to reschedule this for later in the year, although we understand from Maxine that she is starting to travel about the country again taking workshops so will have to get in early for a date to be set.

I enjoyed speaking on behalf of the pastel group at the Social Evening in early March and it was good to welcome so many new members all enjoying themselves and I am looking forward to seeing them at the pastel sessions. We do enjoy a cup of coffee at the start of our all-day sessions, but don't make a big thing of it. Plenty of happy socialising goes on in the kitchen while the coffee is being made and there is always room for more to come along and enjoy these sessions with us.

With Margaret Hunt I am off to the PANZ Auckland Convention next week. I will be able to report on how our workshop with Julie Greig goes and the Convention itself. Plus, a big thank you to all those who kindly supported the PANZ raffle by buying tickets for the raffle at last Monday's session. Will be in touch with news of your prizes!

Keep up the great work.
Kind regards

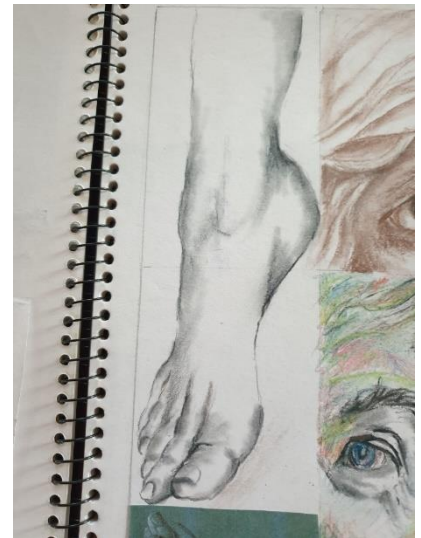
Mary McTavish, Pastel Convenor

PANZ Rep for BOP

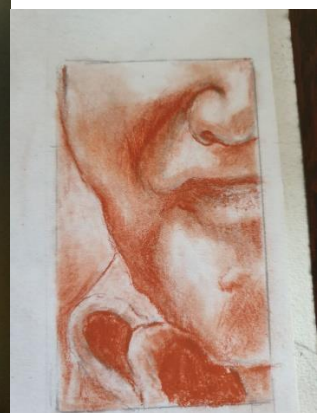
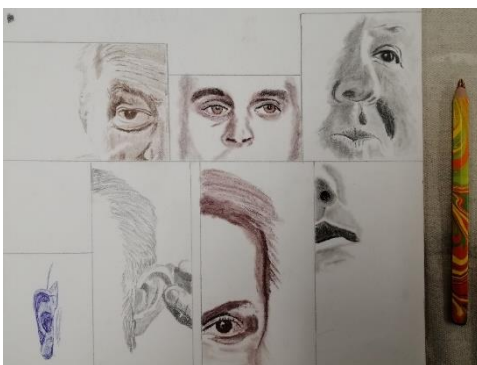
PORTRAITURE THURSDAY SESSION WITH BEV MOORE

The Thursday afternoon classes have been really enjoyable for me as a tutor and very rewarding to observe people's increased confidence and skills. We have looked at exploring different media and coloured papers to explore tone and always working on observational skills. Asking the key questions around tonal values, accuracy of line and how shapes/features relate to each other in the faces we draw.

Many thanks to the TSA members who have come in as models as your appreciation of the process and interest in the work done has been a bonus. Each session has three to four models so we have a variety of ages and stages to choose from and it has been a relaxed learning environment. We have looked at children as well as character/mature faces and will be doing the "before and after" sketches next week to really demonstrate the progress made. There is a session on Thursday April 1st to ensure the six as I had to postpone one. I am planning on running some more sessions later in the year.



One of the exercises given was to copy and cut up black and white images of 1970-1980's Hollywood stars, using different media for each, draw their features thinking of *shapes* not "whole faces/formal portrait". This proved to be fun, informative and some great work was done.



Bev Moore, convenor

PROGRAMME AND COMPETITIONS SUB-COMMITTEE

The Programme and Competition Committee has some new members this year and welcome Janet Fox, Carol Tanner and Wendy Fullerton. Along with Lyn Watts, Jenny Roberts and Malcolm Drysdale we are all working towards future programmes including a new critique session beginning in May and held every second month for those who wish to advance and gain insight into their painting processes. The artist appointed each session will share their professional knowledge for the benefit of all those who want to attend.

A new wall planner will be in the Art Rooms so that everyone can see when other tutorials will be available throughout the year. We hope you are all looking forward to developing some new skills, learning about other mediums and having the opportunity to meet new friends.

Lyn Watts, Malcolm Drysdale, Jenny Roberts, Janet Fox, Carol Tanner and Wendy Fullerton.

MID-YEAR COMPETITIONS

We will be holding our mid-year competitions on **Saturday 26th June.**

We encourage you to enter a painting for the following mid-year competitions:

- | | |
|---|--|
| 1. Best Still Life | Richard Perkins Memorial Trophy |
| 2. Best Landscape (incl. Cityscape) | Eric Hussey Cup |
| 3. Best Seascape | Eric Hussey Cup |
| 4. Best Portraiture | Thelma Graham Plate |
| 5. Best Pencil Drawing (graphite pencil) | Joan Lushington Sketch Trophy |
| 6. Best Black and white - (pure white & pure black or a mixture of the two) | Reg Chalmers Memorial Rose Bowl |
| 7. Best Mixed Media | Dale Mitchell Memorial Cup |
| 8. Best Figure Study | Ray Thompson "La Vie" Trophy |
| 9. Best Pen & Ink (including Light Wash) | McTavish Trophy |
| 10. Any Medium and any Subject (Members eligible: any member who has not won a Trophy at Tauranga Society competitions previously). | Dara Koru Trophy |

Please bring your paintings to the Elizabeth Street, Community Centre 9.00am – 9.30am.

Tea and coffee will be available at the Art rooms if you wish to stop and have a catch up. The presentation of trophies at the Community Centre will commence at 11.30am followed by viewing of the paintings. Artists may collect their paintings after 12.30pm.

Cover your name on the front of the artwork but have a swing tag with your name, title and category you want to enter, on the back.

MID YEAR COMPETITION RULES

1. All entries to have been completed within the 12 months prior to the competition.
2. Entries must be entirely the member's own work and not done in a class of instruction, or copied from publications or photographs taken by other people without their written permission.
3. Entries must be presented in a finished, dry condition, framed or otherwise finished ready for hanging, with D rings and cord, or finished in a stable mount with a rigid backing – able to be supported and hung.
4. Airbrushed works of art will be accepted but must be labelled as airbrush in its Medium category. If a painting is part airbrushed and part painting it must be labelled as Mixed Media/Airbrush in its Medium category.
5. All entries must have the name of the member, and the category/competition being entered, securely attached to the back of the work on a swing tag long enough to go over the top of the painting and hang in front of the work. The member's name to be covered on the front, if the work is signed.
6. **One entry per person per category** will be accepted, unless otherwise stated by the competition co-ordinator.
7. Members can enter in absentia if another member presents and collects their work.
8. All competing members must be financial.
9. The Committee reserves the right to reject any entry that does not meet the above criteria.
10. All entries will be displayed on the Society's Exhibition Screens – No easels used.
11. All entries are to remain on display until 12.30 pm. Artists may collect their paintings after 12.30 pm.

Mid-Year Competitions "Judging Guidelines".

For the upcoming Mid-Year Competitions, here are some guidelines that will be sent to our judge to assist with judging. You may like to critique your own work before entering using the following criteria:

- 1 *Subject – relevant to the category in which the artwork is entered*
 - 2 *Composition – shows uniqueness and/or originality*
 - 3 *Perspective – good proportions and a passage for the eye to follow*
 - 4 *Colours – do they work for the subject of the piece*
 - 5 *Tonal values – showing lights, darks and transitions*
 - 6 *Craftsmanship –demonstrates excellence and confidence in chosen medium*
 - 7 *Is there emotional impact – if intended*
 - 8 *Presentation – in tune with modern criteria and ease of display*
-

PROGRAMME:

APRIL 2021	
Monday Morning	
	9.30 – 12.00
5	Easter Monday – no pastel session
12	Drawing Audrey Naismith – Convenor
19	Pastels Mary McTavish- Convenor
26	Drawing Audrey Naismith – Convenor (Anzac Day)
Monday Afternoon	
	12.00 – 4.00
5	Easter Monday – no pastel session
12	Drawing Audrey Naismith – Convenor
19	Pastels Mary McTavish- Convenor
26	Drawing continuing from morning session (Anzac Day)
Tuesday Morning	
	9.30 – 12.00
6	'Open Studio' If you would like a friendly place to paint meet at the Society rooms – any medium
13	'Open Studio' If you would like a friendly place to paint meet at the Society rooms – any medium
20	'Open Studio' If you would like a friendly place to paint meet at the Society rooms – any medium
27	'Open Studio' If you would like a friendly place to paint meet at the Society rooms – any medium
Tuesday Afternoon	
	12.30 – 3.00
6	
13	Exhibition Sub-Committee meeting 1.00 pm
20	
27	
Tuesday Evening	
	7.00 – 9.00
6	Practical Art any medium – all welcome – Steve Cordery
13	Practical Art any medium – all welcome – Steve Cordery
20	Practical Art any medium – all welcome – Steve Cordery
27	Practical Art any medium – all welcome – Steve Cordery
Wednesday Morning	
	Rooms open 9.30 – 12.00 noon
7	Painting School with Graham Baker - Cost \$10 per person (bookings are necessary)
14	Portraiture with Robin Purllant – Cost \$5 per person
21	Painting School with Graham Baker - Cost \$10 per person (bookings are necessary)
28	Portraiture with Robin Purllant - no charge
Wednesday Afternoon	
	12.00 – 4.00
7	Open Studio – Acrylics and other medium – help offered if needed - Richard Fenn
14	Open Studio – Acrylics and other medium – help offered if needed - Richard Fenn
21	Open Studio – Acrylics and other medium – help offered if needed - Richard Fenn
28	Open Studio – Acrylics and other medium – help offered if needed - Richard Fenn
Thursday Morning	
	9.30 – 12.00
1	Oil Painting plus other medium with Karen
8	Oil Painting plus other medium with Karen
15	Oil Painting plus other medium with Karen
22	Oil painting plus other medium with Karen
29	Oil painting plus other medium with Karen
ART EXHIBITION (22nd to 25th April at Tauranga Boys College)	
Thursday Afternoon	
	1.00 – 4.00
1	Bev Moore class – portraiture 1-4pm (bookings are necessary)
8	
15	Executive Committee Meeting at Art Rooms 12.30 pm
22	ART EXHIBITION
29	
Friday Morning	
	9.30 – 12.00
2	Life Drawing. Cost \$10.00 with Tanya Bamford King
9	U3A
16	Life Drawing Cost \$10.00 with Tanya Bamford-King
23	U3A
Programme & Comp Meeting 1.00 pm	
ART EXHIBITION	