



ART • PEOPLE • PASSION

NEWSLETTER & PROGRAMME

MARCH 2021

LOCATION: 171A Elizabeth St. West

PHONE: 07 5716859

EMAIL: taurangaartsociety@xtra.co.nzFACEBOOK: [Tauranga Society of Artists](https://www.facebook.com/TaurangaSocietyofArtists)WEBSITE: www.taurangasocietyofartists.org.nz

2020/2021 COMMITTEE

President: Debbie Clarke 027 496 1752**Vice President:** Adrian Muller 027 542 2167**Secretary:** Carol King 07 576 1891**Treasurer:** Lynn Webb 027 945 0275**Newsletter Editor:** Alison Underwood 021 2500 504

John Campbell 021 663 355

Kinsa Hays 021 864 654

Wendy Fullerton 027 330 3698

Jitske Schokking 07 576 5894

ADVANCE NOTICE 2020 – Mark your diaries!

21st – 25th AprilTuesday 1st JuneSat 26th June6th – 10th OctoberSat 27th November

Art Expo

AGM

Mid-year competitions

Supreme Art Awards and Expo

End-of-year competitions/social

FROM THE PRESIDENT

It's hard to believe we are about to start the third month of 2021 already. I have been very lucky to enjoy a lovely long 6 weeks on the ocean enjoying our beautiful island paradise. Lots of fishing (not always successful), times with friends and family and painting. I hope you have enjoyed the plentiful sunshine we have had too.

I would like to draw your attention to the article on Copyright later in this newsletter – it is very relevant to artists using reference images and is a reminder of what you can call your own composition and artwork without breaching someone else's rights and to comply with rules of exhibition and competitions.

Ahead of us we have an exciting program of arts involvement. On Monday 8th March we invite you to join us for a social evening from 5.30pm at the Art Room, particularly to welcome our new members and catch up with those you don't get to see regularly. I hope to see you there.

Our first big event for the year is our Expo to be held again at Tauranga Boys College 21-25 April. See later in this newsletter for more details. I would just like to ask those who kindly added their names to Expo Helpers List that was in the foyer at the Art Room to please either email by return or re-enter their name and what they can offer help with. Unfortunately, my home was burgled prior to Christmas and my briefcase with all my Art Society documents was stolen (along with my car, computer, etc.) so I have lost that list. Thanks in advance.

In June we have our Mid-Year Competitions offering all the usual categories but this year we have a new trophy - The Dara Trophy - which is a beautiful glass Koru. This trophy has been generously donated by Lynn Dara and her family to the Society. The Dara trophy category can be entered by "any member of the Society who has not been awarded a trophy in Tauranga Society of Artists competitions previously". If you have been awarded a Merit Award in previous competitions, you can still enter this category.

The criteria is: 'any medium, any subject'. Our thanks to the Dara Family for this excellent addition to our Trophy collection. Categories for Mid-Year Competitions later in Newsletter.

It is with sadness that we farewell long-time Society member, great enthusiast and tutor, Boni Palmer this week. Her passion for watercolour, horses and her cheeky, larger than life personality will be missed by many. We send our love and support to Boni's family and friends.

I look forward to seeing you at the Art Room in the near future.

Happy painting.

Debbie Clarke, President

0274 961 752

debbie.clarke@landmarkhomes.co.nz

NOTICES

WELCOME TO NEW MEMBER

We are pleased to welcome Catherine Schuts who recently joined the Society.

Executive Committee, Tauranga Society of Artists

INVITATION TO OUR SOCIAL EVENING

Monday 8 March, 5.30pm – 7.30pm

All members are warmly invited to an informal social evening at the Society's rooms, 171a Elizabeth Street, on Monday 8 March, 5.30pm to 7.30pm. Light refreshments will be served.

It is an opportunity to welcome our new members and chat to the committee, the session convenors and your fellow members. We look forward to seeing you there.



FACEBOOK & INSTAGRAM



<https://www.facebook.com/taurangaartsoc>



Our Instagram id is @taurangaartsoc

Facebook Update

Let's make a splash in 2021, share your news, your latest successes, your artistic struggles, your latest discoveries, your upcoming exhibitions and photos from your TSA sessions. Let's make our social media interesting tell your fellow artists what you are up to... email or message to Christiecramerart@gmail.com and I'll get it out there for you.

Thanks, Christie christiecramerart@gmail.com

Christie Cramer, Facebook & Instagram Admin

ORIGINAL ART EXPO: 22ND - 25TH APRIL 2021

The Exhibition team are well underway with preparations for our first exhibition for 2021. The venue will be Tauranga Boys College gymnasium where we held our very successful Supreme Award Expo in September 2020.

Historically the Society has held the Supreme Awards in the April / June Expo. However, because it was just presented in September as a result of postponements caused by Covid, the decision has been made to repeat the timing of the Supreme Awards as part of the 2021 October Expo (6th-10th October).

Artworks entered - As previously, you will be able to enter up to 5 artworks, plus 3 tiny artworks. But they must fit on an area of not more than 1.2m x 2.4m. Tiny Art are artworks 150mm x 150mm or smaller and will be a category again this year with up to 3 per artist.

Live Art - At our 2020 Expo we had a number of artists 'working live'. Visitors to the Expo enjoyed having a chat with the artists and many questions were answered, demystifying some aspects of painting. It is a great way to encourage and welcome new members. Please do consider participating in this fun activity and add your name to the roster.

Card Sales - This has been very successful in our trial runs at previous Expos and will be an option. Guidelines available on request.

Entry forms will be available in the Foyer on 9th March and Entries close on 26th March. More information about the Expo on the poster in the art rooms and below.

Get painting! We sold over 100 paintings at the last Expo held at the Boys College – our most successful sales.

Start Painting NOW!

ORIGINAL ART EXPO

Trust power.

TAURANGA SOCIETY OF ARTISTS

Thursday 22nd - Sunday 25th April 2021

Set Up and Gala Opening 21st April

Tiny Art • Painting Demonstrations • Prints & Cards

What you can enter:

Enter up to 5 artworks (these must fit on 2.4m x 1.2m space)
PLUS 3 Tiny Art

Entries close:
Closing date for receipt of entries is **5pm Friday 26th March**

The costs:
\$30 Non-refundable Fee regardless of how many pieces you enter.
20% Commission

Exhibition dates:
22nd - 25th April

Entry Forms available in the Art Room's foyer from 9th March

Rules of entry

Each submitted work:

- 1 Must be the sole original work of the artist.
- 2 Must be for sale.
- 3 Must be complete and dry before delivery.
- 4 Must be insured by you. The Society offers an '**all care-no responsibility**' approach.
- 5 The use of other's photo references must have written permission.
- 6 Triptychs and Diptychs can be entered as one entry, provided that together they form a complete piece and they are priced to be sold together.
- 7 Enter work with mix of airbrush & traditional as mixed.
- 8 **Entered paintings must fit on one 2.4 x 1.2 metre screen.**

None of the entries can have been entered in 2020 Art Expo and all entrants must be financial members.

COPYRIGHT

Copyright protection is automatic. The instant you draw a picture or write a poem your works are protected by copyright. This includes photographs. The copyright of a specific work is owned by the person who created that work.

Therefore, reference images that you want to use to create a drawn or painted artwork (particularly when being used for competition, exhibition or sale) must be:

- Your own photo.
or
- A photo that you have direct written permission to reproduce in your art medium from the ORIGINAL owner of the photograph (Original owners of photos can be searched for on the internet).
or
- A free or paid for photo from a 'royalty free' or 'public domain' source.

Never just use photos from magazines (even advertisements) unless you change it enough so that it is definitely its own original.

To create your own original from reference images, you can combine the following to make your own original.

- Change the composition.
- Flip it and mirror reverse it.
- Change the expression.
- Change the lighting.
- Make up part of it.
- Use only a part of several images.

This takes some skill. But in the end, you can achieve an artwork that even the photographer would have trouble recognising.

It does not violate copyright to check a photo of a bird of paradise to see what its markings are and then paint a bird you put into the pose you saw out on your tree. Or check the stripes on one tiger and put them on your tabby for fun. That's the sort of thing so original no one could really even figure out whose tiger photo you got the stripes from, and it would never be mistaken for the original.

You are not actually ripping off Hallmark for that cute kitten leaning on a puppy if you put in a puppy from a different card and then pose them on your couch or the lap of your baby instead of the background on the Hallmark card.

Below are some excellent sources of non-copyrighted photos. There are thousands of high-quality images available through these websites that with a little effort you can use without breaching anyone's copyright. Photo Reference resources: Pixabay.com; Unsplash.com; Morguefile.com; Pexels.com; Istock photos; Deviant Art.

WetCanvas - is an online art community and has an enormous Reference Image Library, which is free to use without attribution or anything special. If you reference something from the site, however, you should link to the photo or at least mention it's from the RIL and attribute it. But the primary rule is strict. You have to actually join the community to use the photos.

Make friends with talented amateurs – find them on Facebook or Instagram. Message them and ask nicely when you find an image you want to use. Be sure to offer attribution and a link to their original image when you post it to the community. And if you want to sell the art, tell them. This is one of the best sources for free images.

Disclaimer: this is a summary of advice gathered from the Internet. It is not a legal opinion. If you are in doubt about the use of a reference image, you should get independent legal advice or choose a reference image that you know is not copyrighted.

LIBRARY NEWS

The February newsletter contained an article by our president, Debbie Clarke. She wrote of reading "Drawing on The Right Side of The Brain" by Betty Edwards. The book is in our library in the Drawing category (No 59).

The three books to be reviewed this month are of drawing the human figure. There are a number of books in the library covering this topic, plus anatomy and life drawing.

1) **PRINCIPLES OF FIGURE DRAWING** by Alexander Dobkin (No 18)

An oldie, (published in 1948) written by an experienced artist and teacher. Included are sketched images to develop one's ability to SEE with techniques for being more than a photographic presentation. The illustrations are of a number of studies easily followed for a comfortable composition of figures in motion. The contents cover proportion, bone structure, (an explanatory skeleton), differences between female and male form, mediums etc. - even draped figures of the then fashions! Many of the sketches are examples from the great masters with relevant explanations.

2) **THE HUMAN FIGURE IN MOTION** by Eadweard Muybridge (No 26)

This book published in 1955 contains 195 plates of every conceivable type of photographed actions, taking all the guessing out of displaying the figure that may be used in a painting. Famous in his time of the late 19th century, the author's photography marked a change in the form from the conventional methods of portraying motion, be it in humans or animals. The photos extensively cover the actions of men, women and children, some of whom are draped.

3) **THE FIGURE IN MOTION** by Thomas Easley (No 32)

The introduction to this book sums it up as "a visualist guide to body motion and compositional possibilities". Lighting is an integral consideration for the photographed poses, the compositions being an exercise specifically for artists.

Bear in mind that both books (2 & 3) are a useful photographic portrait of the human form so that how they are depicted in a painting, whatever the pose, clothed or not, is for the artistic interpretation.

(NB There is a blue plastic container under the office desk for returned books – as labeled.)

Audrey Naismith, Librarian

SESSION LEADERS

- Monday am/pm, 1st and 3rd week -- **PASTELS** -- Mary McTavish, jhmemcts@gmail.com
- Monday am/pm, 2nd and 4th week -- **DRAWING** -- Audrey Naismith, 544 3068
- Tuesday am -- **OPEN STUDIO** -- Deb Clarke (for now), 027 496 1752
- Tuesday evening -- **OPEN STUDIO** -- Steve Cordery, 027 510 6669
- Wednesday am, 1st and 3rd week -- **ART SCHOOL** -- Graham Baker, 022 488 0786
- Wednesday am, 2nd and 4th week -- **PORTRAITURE** -- Robin Purllant, rpurllant@gmail.com
- Wednesday pm -- **OPEN STUDIO** -- Richard Fenn, 577 1644 or 027 245 1741
- Thursday am -- **OPEN STUDIO OILS** -- Karen Pritchard, 544 6574 or 021 197.3737
- Friday am, 1st and 3rd week -- **LIFE DRAWING** -- Tanya Bamford King, 021 271 2493

*Members are welcome to attend advertised sessions
but bookings are required for Painting School and the first Portraiture session each month*

ART IN THE PARK & ON THE STRAND



NO COSTS – NO COMMISSION

Great opportunities for members of the Tauranga Society of Artists Inc to display & sell your art, mix with your fellow artists, and interact with the public – local, from other areas of New Zealand, and overseas.

DATES FOR MARCH – JUNE 2021

MONTH	ART in PARK (SATURDAYS)	ART on STRAND (SUNDAYS) Please note change
2021:		
MARCH	SATURDAY 13th and 27th	SUNDAY 7th and 21st
APRIL	SATURDAY 3rd and 10th and 24th	SUNDAY 18th
MAY	SATURDAY 8th and 22nd	SUNDAY 2nd and 16th
JUNE	SATURDAY 12th and 26th	SUNDAY 6th and 20th

PLEASE NOTE:

- **Set up time** is from 8am and **end time** is before 5pm.
- **During winter months:** Set up is a little later – from 9am, and end time earlier dependent on weather conditions.
- If Council makes any changes to the above dates you will be advised by group email.

ARTIST OF THE MONTH: MONDAY DRAWING GROUP

Regular members of the Drawing class are showing a variety of artworks during March and April in the Society art rooms.

Artist of the month is an opportunity for members or a group to have 5 pieces of their artwork hung for display in the Society rooms for a month. Anyone can participate. If you would like to have your work on show in the future (don't be shy), **contact Alison Underwood by email at taurangaartsociety@xtra.co.nz**

PORTRAITURE WEEKEND WORKSHOP WITH BEV MOORE: SATURDAY 13 AND SUNDAY 14 MARCH

Time: 9.30am - 4pm.

The charge for the two-day workshop is \$120 per person.

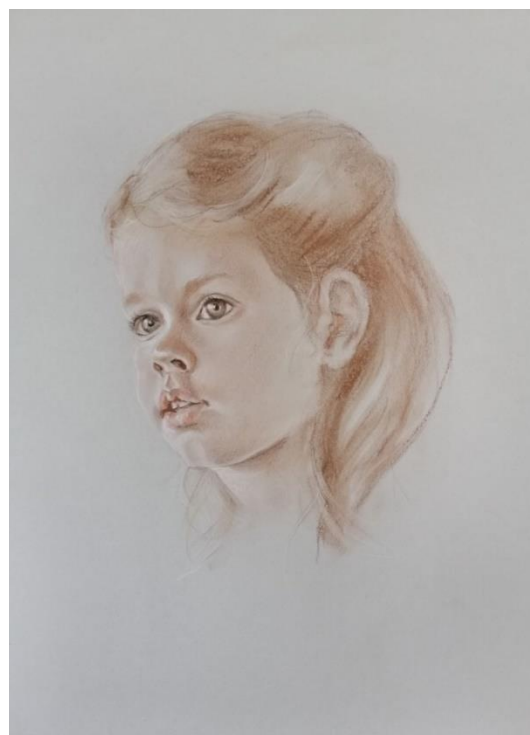
Drawing babies, children, young people.

This is an area of real interest as a number of members have mentioned how much they would like to draw those very precious little people, grandchildren. This is something I can relate to as a grandparent and an artist and particularly enjoy.

It is challenging to draw children but so rewarding and worth the effort. Participants can work from photos of your own children/grandchildren as well as live models to explore how best to capture the age and stage.

I will bring paper and a variety of pencils/charcoal for people to use as I do with the six-week course. This workshop is limited to 10 people.

Register on the form in the foyer. Some materials will be provided and some you will be asked to bring along yourself.



PASTEL SESSIONS

Welcome to the new faces in the pastel group Janeen George and Jennifer Whalley. It is good to see Brian Frank back amongst us as well.

You may have read in the BOP Times that Boni Hill-Palmer has recently passed away. We pass on our sincere condolences to her family. She was a spirited member, always ready to give constructive and meaningful advice. She will be missed by many that knew her.

We have had two pastel sessions through February with a good turnout on both days. There will be three Mondays in March so please make a note of the dates – March 1st, March 15th and March 29th.

From a good-sized group travelling to Auckland to the upcoming Pastel Artists of NZ (PANZ) Convention at the end of March there are now just two of us going to Devonport, Auckland to attend a workshop and the Convention. I will report on happenings in due course.

We can take more members if you wish to come along to the first and third Monday sessions. Just bring along your enthusiasm to give pastels a try. Enjoy your painting



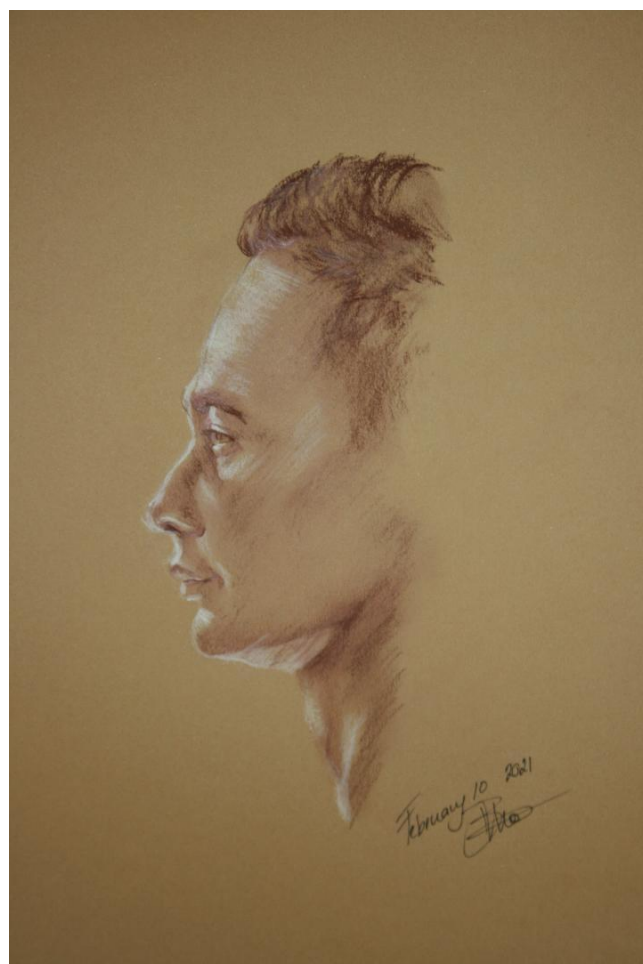
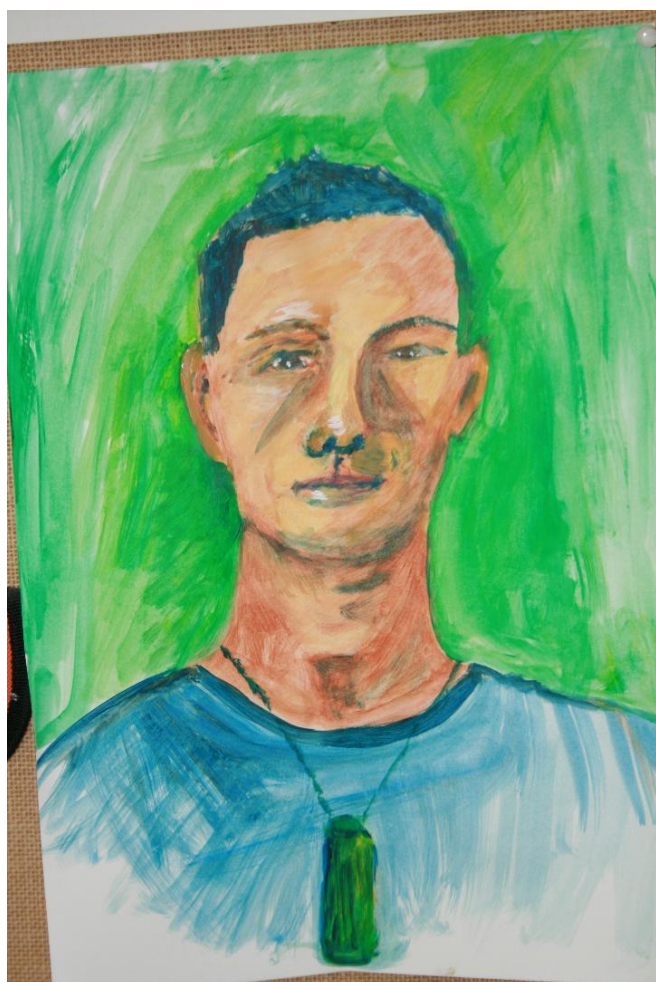
Mary McTavish, Pastel Convenor
PANZ Rep for BOP

PORTRAITURE

“Drawing is rather like chess: your mind races ahead of the moves that you eventually make.” David Hockney

Our first session for the year began with members producing some wonderful drawings and a particularly fine and characterful painting. Our model was supplied by Annamarie from Takitimu House, which is the Tauranga Moana Night Shelter Trust, just opposite our rooms in Elizabeth Street. They frequently supply a model for our sessions for which we are extremely grateful.

After a long break it was good to see most of our group again, all keen to build on their progress from last year. Mary Winnard did a wonderfully spontaneous little painting that really brought out the character of our model. Bev Moore also produced a lovely drawing. Bev will be taking portrait classes soon and I strongly recommend that all members who are keen to develop their portrait skills attend. Bev is both a wonderful tutor and a skilful portrait artist. Not to be missed!



Robin Purllant, convenor

PAINTING SCHOOL

Painting School: 1st and 3rd Wednesday mornings of each month. (Sessions are fully booked.)

Session news:

The Wednesday morning painting techniques sessions are well underway, having completed the first of the four paintings and into the second.

The first was a simple seascape painting incorporating blending of the sky and sea. Elements included clouds, headland and a sandy beach and the effects were sunlight and shadows from wind on the water and texture on the beach.

The second painting offers us the opportunity to go over the same techniques. Work on our first bush and a man-made object. These first two paintings are the same as last year which we are powering through, with extended notes to support them.

This term the group has to work harder at home. Then bring in their paintings so I can make sure they understand the techniques.

In the next session we will complete the boathouse painting then go over the effects involved and play around with more including those coming up in the third painting of the series.

The group is going well and having fun probably because they take the techniques and effects then put their own interpretation into them and that is encouraged.



Graham Baker, convenor

PORTRAITURE THURSDAY SESSION WITH BEV MOORE

Our first class was oversubscribed and has a wait list. It was a real pleasure sharing that level of enthusiasm with those who were part of our first session on Thursday afternoon.

We had three models and also drew each other to establish the starting point which will be compared with a similar pose in five weeks. I did demonstrations and discussed "what to consider before you start" and the all-important, "contact and comfort" for artist and model. The time went very fast indeed.



Bev Moore, convenor

MID-YEAR COMPETITIONS

We will be holding our mid-year competitions on **Saturday 26th June.**

We encourage you to enter a painting for the following mid-year competitions:

1. Best Still Life
2. Best Landscape (incl. Cityscape)
3. Best Seascape
4. Best Portraiture
5. Best Pencil Drawing (graphite pencil)
6. Best Black and White - (pure white & pure black or a mixture of the two)
7. Best Mixed Media
8. Best Figure Study
9. Best Pen & Ink (including Light Wash)
10. Any Medium and any Subject (Members eligible: any member who has not won a Trophy at Tauranga Society competitions previously).

Richard Perkins Memorial Trophy

Eric Hussey Cup

Eric Hussey Cup

Thelma Graham Plate

Joan Lushington Sketch Trophy

Reg Chalmers Memorial Rose Bowl

Dale Mitchell Memorial Cup

Ray Thompson "La Vie" Trophy

McTavish Trophy

Dara Trophy

Please bring your paintings to the Elizabeth Street, Community Centre 9.00am – 9.30am.

Tea and coffee will be available at the Art rooms if you wish to stop and have a catch up. The presentation of trophies at the Community Centre will commence at 11.30am followed by viewing of the paintings. Artists may collect their paintings after 12.30pm.

Cover your name on the front of the artwork but have a swing tag with your name, title and category you want to enter, on the back.

MID YEAR COMPETITION RULES

1. All entries to have been completed within the 12 months prior to the competition.
2. Entries must be entirely the member's own work and not done in a class of instruction, or copied from publications or photographs taken by other people without their written permission.
3. Entries must be presented in a finished, dry condition, framed or otherwise finished ready for hanging, with D rings and cord, or finished in a stable mount with a rigid backing – able to be supported and hung.
4. Airbrushed works of art will be accepted but must be labelled as airbrush in its Medium category. If a painting is part airbrushed and part painting it must be labelled as Mixed Media/Airbrush in its Medium category.
5. All entries must have the name of the member, and the category/competition being entered, securely attached to the back of the work on a swing tag long enough to go over the top of the painting and hang in front of the work. The member's name to be covered on the front, if the work is signed.
6. **One entry per person per category** will be accepted, unless otherwise stated by the competition co-ordinator.
7. Members can enter in absentia if another member presents and collects their work.
8. All competing members must be financial.
9. The Committee reserves the right to reject any entry that does not meet the above criteria.
10. All entries will be displayed on the Society's Exhibition Screens – No easels used.
11. All entries are to remain on display until 12.30 pm. Artists may collect their paintings after 12.30 pm.

Mid-Year Competitions "Judging Guidelines".

For the upcoming Mid-Year Competitions, here are some guidelines that will be sent to our judge to assist with judging. You may like to critique your own work before entering using the following criteria:

- 1 *Subject – relevant to the category in which the artwork is entered*
- 2 *Composition – shows uniqueness and/or originality*
- 3 *Perspective – good proportions and a passage for the eye to follow*
- 4 *Colours – do they work for the subject of the piece*
- 5 *Tonal values – showing lights, darks and transitions*
- 6 *Craftsmanship – demonstrates excellence and confidence in chosen medium*
- 7 *Is there emotional impact – if intended*
- 8 *Presentation – in tune with modern criteria and ease of display*

PROGRAMME:

MARCH 2021	
Monday Morning	
	9.30 – 12.00
1	Pastels Mary McTavish- Convenor
8	Drawing Audrey Naismith - Convenor
15	Pastels Mary McTavish- Convenor
22	Drawing Audrey Naismith - Convenor
29	Pastels Mary McTavish- Convenor
Monday Afternoon	
	12.00 – 4.00
1	Pastels Mary McTavish- Convenor
8	Drawing continuing from morning session
15	Pastels Mary McTavish- Convenor
22	Drawing continuing from morning session
29	Pastels Mary McTavish- Convenor
Monday Evening – 8th March	
	5.30pm to 7.30pm Social Evening
Tuesday Morning	
	9.30 – 12.00
2	'Open Studio' If you would like a friendly place to paint meet at the Society rooms – any medium
9	'Open Studio' If you would like a friendly place to paint meet at the Society rooms – any medium
16	'Open Studio' If you would like a friendly place to paint meet at the Society rooms – any medium
23	'Open Studio' If you would like a friendly place to paint meet at the Society rooms – any medium
30	'Open Studio' If you would like a friendly place to paint meet at the Society rooms – any medium
Tuesday Afternoon	
	12.30 – 3.00
2	
9	Exhibition Sub-Committee Meeting 1pm
16	Executive Committee Meeting 12.30pm
Tuesday Evening	
	7.00 – 9.00
2	Practical Art any medium – all welcome – Steve Cordery
9	Practical Art any medium – all welcome – Steve Cordery
16	Practical Art any medium – all welcome – Steve Cordery
23	Practical Art any medium – all welcome – Steve Cordery
30	Practical Art any medium – all welcome – Steve Cordery
Wednesday Morning	
	Rooms open 9.30 – 12.00 noon
3	Painting School with Graham Baker - Cost \$10 per person (bookings are necessary)
10	Portraiture with Robin Purlant - Cost \$5 per person
17	Painting School with Graham Baker - Cost \$10 per person (bookings are necessary)
24	Portraiture with Robin Purlant - No charge
Wednesday Afternoon	
	12.00 – 4.00
3	Open Studio – Acrylics and other medium – help offered if needed - convenor Richard Fenn
10	Open Studio – Acrylics and other medium – help offered if needed - convenor Richard Fenn
17	Open Studio – Acrylics and other medium – help offered if needed - convenor Richard Fenn
24	Open Studio – Acrylics and other medium – help offered if needed - convenor Richard Fenn
31	Open Studio – Acrylics and other medium – help offered if needed - convenor Richard Fenn
Thursday Morning	
	9.30 – 12.00
4	Oil Painting plus other medium with Karen Pritchard
11	Oil Painting plus other medium with Karen Pritchard
18	Oil Painting plus other medium with Karen Pritchard
25	Oil Painting plus other medium with Karen Pritchard
Thursday Afternoon	
	1.00 - 4.00
4	Bev Moore class – portraiture 1-4pm (bookings are necessary)
11	Bev Moore class – portraiture 1-4pm Programme & Comps Meeting 1.00 pm at 60 Fifth Ave
18	Bev Moore class – portraiture 1-4pm (bookings are necessary)
25	Bev Moore class – portraiture 1-4pm (bookings are necessary)
Friday Morning	
	9.30 – 12.00
5	Life Drawing. Cost \$10.00 with Tanya Bamford King
12	U3A
19	Life Drawing Cost \$10.00 with Tanya Bamford-King
26	U3A