



ART • PEOPLE • PASSION

# NEWSLETTER & PROGRAMME

## SEPTEMBER 2020

LOCATION: 171A Elizabeth St. West

PHONE: 07 5716859

EMAIL: [taurangaartsociety@xtra.co.nz](mailto:taurangaartsociety@xtra.co.nz)FACEBOOK: [Tauranga Society of Artists](https://www.facebook.com/TaurangaSocietyofArtists)WEBSITE: [www.taurangasocietyofartists.org.nz](http://www.taurangasocietyofartists.org.nz)

### 2020/2021 COMMITTEE

**President:** Debbie Clarke 027 496 1752**Vice President:** Adrian Muller 07 542 2167**Secretary:** Carol King 07 576 1891**Treasurer:** Lynn Webb 027 945 0275**Newsletter Editor:** Alison Underwood 021 2500 504

John Campbell 021 663 355

Bev Montgomery 07 570 3358

Wendy Fullerton 027 330 3698

Jitske Schokking 07 576 5894

Kinsa Hays 021 864 654

### ADVANCE NOTICE 2020 – Mark your diaries!

**Thursday 1 to Sun 4 October**

Supreme Art Awards and Expo (setup &amp; opening on Wednesday 30 September)

**Thursday 19 to Sunday 22 November**

Garden and Art Fest Expo

**Saturday 12 December**

End-of-year competitions

### FROM THE PRESIDENT

Hello everyone,

It's been a busy month. I thought today I would let you know a few things that have been happening behind the scenes by the Executive, Exhibition and Competitions and Programming teams. The trophies have been engraved for the recent competition winners; Entry Packs for upcoming Expo have been 'stuffed' and put in the foyer for your use (I see there are about 20 left so don't miss out on getting one;) and the Executive Committee have discussed all the various items including the repair of the leaky roof in the Art Room. This is going to be attended to by a professional roofer and a new Butynol flashing inserted as soon as possible. Several members attended the Garden and Art Fest information evening for artists.

With the completion of the new display screens we are changing storage rooms in the Elizabeth Street Community Centre to a slightly larger one with double doors to give us a little more space to store the lights and screens.

I hope you are madly painting for our upcoming Expo. With the postponement of our recent competitions and the midyear Expo caused by Covid, we have ended up with a very 'full on' second half of the year. But I think we are ready for that after all the stay at home time we have had. Not only do we have our Expo and Supreme Art Award in the first week of October, but also a large exhibition opportunity in the Garden and Art Fest 19-22 November followed by End of Year Competitions in December.

We were very thrilled to be allocated a very LARGE function room for exhibition at the Tauranga Racecourse where the Garden and Art Fest 'Hub' is being held. There are many garden displays and related activities held. The 'hub' or Bloom in the Bay as it is called, will be open to the public – no tickets required – and is a wonderful opportunity for us to exhibit and sell artwork to a large and different audience. The last Garden and Art Fest attracted 13,000 visitors to the 'hub'.

I encourage you to keep those brushes flying as the next four months offer these two great displays and selling events. Because of the large exhibit area, we are hopeful to be able to invite you to enter more artwork than previously in the Garden and Art Fest including a new category – Outdoor Art – artworks that are weatherproof and can be hung outdoors. More about that later.

Happy painting

*Debbie Clarke, President*

0274 961 752

[debbie.clarke@landmarkhomes.co.nz](mailto:debbie.clarke@landmarkhomes.co.nz)

---

## NOTICES

### CAN YOU HELP?

John Campbell loaned a book: ANGLO - BOER WAR ARTISTS by RYNO GREENWALD during last year's Annual Exhibition at Tauranga Boys College to an art society member. He would like to have it returned. Please contact JOHN CAMPBELL on phone: 021 663 355 or [johncampbellnz@hotmail.com](mailto:johncampbellnz@hotmail.com) Thank you.

*John Campbell*

---

## FACEBOOK & INSTAGRAM



<https://www.facebook.com/taurangasocietyofartists/>



Our Instagram id is @taurangaartsoc

### Facebook Update

With the Expo coming up next month, if you have work (not a Supreme Award entry) you would like me to feature on the event page email me at [christiecramerart@gmail.com](mailto:christiecramerart@gmail.com)  
Looking forward to all the amazing paintings coming through.

*Christie Cramer, Facebook & Instagram Admin*

---

## SESSION LEADERS

- Monday am/pm, 1<sup>st</sup> and 3<sup>rd</sup> week -- **PASTELS** -- Mary McTavish, [jhmemcts@gmail.com](mailto:jhmemcts@gmail.com)
- Monday am/pm, 2<sup>nd</sup> and 4<sup>th</sup> week -- **DRAWING** -- Audrey Naismith, 544 3068
- Tuesday am -- **OPEN STUDIO** -- Deb Clarke (for now), 027 496 1752
- Tuesday evening -- **OPEN STUDIO** -- Steve Cordery, 027 510 6669
- Wednesday am, 1<sup>st</sup> and 3<sup>rd</sup> week -- **ART SCHOOL** -- Graham Baker, 022 488 0786
- Wednesday am, 2<sup>nd</sup> and 4<sup>th</sup> week -- **PORTRAITURE** -- Robin Purllant, [rpurllant@gmail.com](mailto:rpurllant@gmail.com)
- Wednesday pm -- **OPEN STUDIO** -- Richard Fenn, 577 1644 or 027 245 1741
- Thursday am -- **OPEN STUDIO OILS** -- Karen Pritchard, 544 6574 or 021 197.3737
- Friday am -- **LIFE DRAWING** -- Tanya Bamford King, 021 271 2493

*Members are welcome to attend advertised sessions  
but bookings are required for Painting School and the first Portraiture session each month*

---

## Wednesday 29 September to Sunday 4 October – Original Art Expo and Supreme Art Award

### Six weeks to go until this grand event!

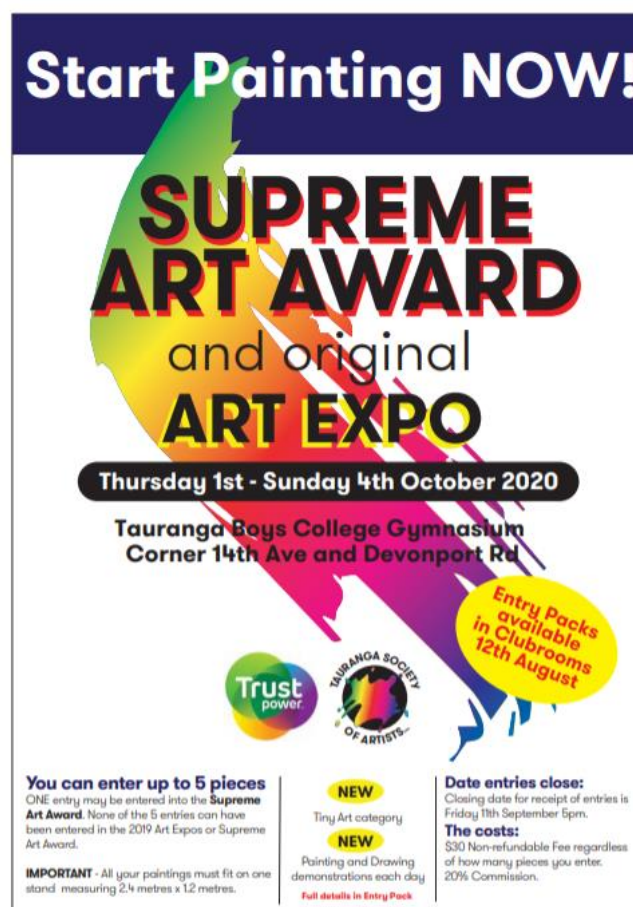
Entries close Friday 11<sup>th</sup> September 5pm. I hope you have picked up your Entry Pack and read through the Registration details. You will see that the rules around the number of paintings you can enter have changed. This Expo your artwork must be able to fit on an area 2.4m x 1.2m.

You can enter up to 5 artworks PLUS 3 Tiny Artworks - new category. That doesn't mean they have to be able to be arranged for display aesthetically on this area. They just have to fit - can be sideways, whatever.

It is just a way of keeping it fair and making sure we have room for everyone's artwork. The Supreme Award and Tiny Art will be hung in separate areas.

We now have 35 double sided screens ALL beautifully illuminated with our new lights. Many thanks again to Trustpower for their sponsorship that enabled us to expand our screen and lighting numbers.

I warmly encourage you to participate in this wonderful event and selling opportunity. If you have any queries, feel free to ring or email. Debbie Clarke (0274961 752) or [debbie.clarke@landmarkhomes.co.nz](mailto:debbie.clarke@landmarkhomes.co.nz)



**Start Painting NOW!**

# SUPREME ART AWARD

and original

# ART EXPO

**Thursday 1st - Sunday 4th October 2020**

**Tauranga Boys College Gymnasium**  
Corner 14th Ave and Devonport Rd

**Entry Packs available in Clubrooms 12th August**

**Trust power** **TAURANGA SOCIETY OF ARTISTS**

**You can enter up to 5 pieces**  
ONE entry may be entered into the Supreme Art Award. None of the 5 entries can have been entered in the 2019 Art Expos or Supreme Art Award.

**NEW**  
Tiny Art category

**NEW**  
Painting and Drawing demonstrations each day

**IMPORTANT** - All your paintings must fit on one stand measuring 2.4 metres x 1.2 metres.

**Date entries close:**  
Closing date for receipt of entries is Friday 11th September 5pm.

**The costs:**  
\$30 Non-refundable Fee regardless of how many pieces you enter.  
20% Commission.

**Full details in Entry Pack**



# RULES

**Trust power** **TAURANGA SOCIETY OF ARTISTS**

# SUPREME ART AWARD

and original

# ART EXPO

**Tauranga Boys College Gymnasium**  
Corner 14th Ave & Devonport Rd

**Thursday 1st - Sunday 4th October 2020**  
Set Up & Opening Wednesday 30th September

**YOU CAN ENTER UP TO 5 PIECES - One** of the entries may be entered into the **Supreme Art Award**. **None of the 5 entries can have been entered in the 2019 Art Expos or Supreme Art Award.**

- **IMPORTANT** - All your paintings must fit on one stand measuring 2.4 metres x 1.2 metres. We advise you to measure this area out and make sure your paintings will fit within this area. (The Society reserves the right to exclude paintings if they do not fit).
- **NEW TINY ART CATEGORY** This category is for paintings that are **150mm x 150mm** or less. The total area of each artwork not to exceed **225cm<sup>2</sup>** (frame and mat can be extra to this) with a price cap of \$150. **Three paintings may be entered.**

**Please Note: the 3 Tiny Art entries are OVER AND ABOVE your 5 allowed paintings and display stand area.**

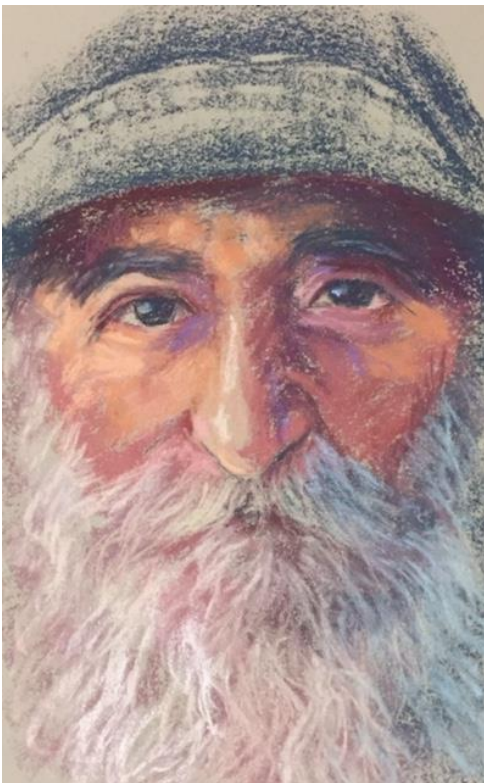
Please use the Expo invitation on the last page of this newsletter to hang in lunchrooms, offices, noticeboards of any relevant groups/ businesses you belong to or invite someone who is interested



## MAXINE THOMPSON'S PASTEL WORKSHOP:

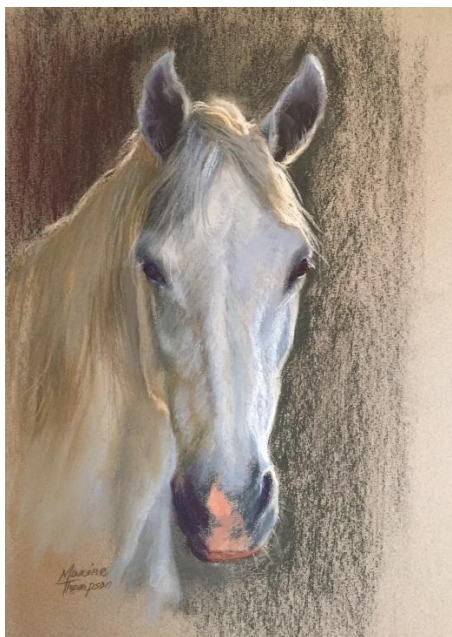
### 'Portraits – "Where to Start and the Process"'

This two-day workshop will be held on Saturday 12<sup>th</sup> & Sunday 13<sup>th</sup> September.  
The hours are 9.00am – 4.00pm. The cost for the two days is \$145 per person.



## MAXINE THOMPSON'S PASTEL WORKSHOP: "Wild Life in Pastel"

This is a two-day workshop and will be held on Saturday 17<sup>th</sup> and Sunday 18<sup>th</sup> October. The hours are 9.00am – 4.00pm. The cost for the two days is \$145 per person.




---

## PROGRAMME AND COMPETITIONS SUB-COMMITTEE

We would like to thank you all for attending the mid-year competitions with the later start time of 9.00am to allow for traffic problems. It seemed to work. We hoped you all enjoyed Wayne Vickers feedback and art as much as our group.

We still have some concerns about the art presented and how to judge as to whether members are staying within the guidelines for entries. It has been suggested that we have two members as the arbitrators of paintings falling into this area of contention. On the lighter side please could you all place your swing tag on a long length of string, your swing tab should fall in about the middle of your painting when it is attached to the back of your work.

As you will see we have new members on this subcommittee. Kinsa is taking on the week to week timetable. Lyn and Jenny will organise the workshops. There are still some vacancies in Maxine's wildlife pastel workshop on the 17<sup>th</sup> and 18<sup>th</sup> of October. You will find the sign-up list in the art room office on the pin board by the door.



Please note the change in the “Best Emerging Artist” category in the end-of-year competitions. We encourage all members to start their art now for the end-of-year competitions in December. See the categories later in the newsletter. Happy painting everyone.

*Karen Pritchard, Kinsa Hays, Jenny Roberts, Malcolm Drysdale and Lyn Watts*

---

## LIBRARY NEWS

### Thank you:

Steve Cordery and former member Jill Butler for the donation of books to our library. Your contribution is gratefully received.

### GOUACHE (Italian = a wash)

A halfway house media, between water colour and oils. Its strengths are its opacity and brilliance of colour. Early use was by the Egyptians but appeared first in France in the 18<sup>th</sup> century. Often referred to as body colour, used by such painters as Durer, Rubens and van Dyck. Gouache has pigments bound in water soluble gum arabic, the ratio making it heavier and thicker. It can be used similar to watercolour but with the addition of white pigment to a water colour base making it opaque.

The difference between gouache and acrylic: Traditional gouache is opaque water paint so like water colour, is resoluble not water resistant. Acrylic is suspended in acrylic medium (plastic). There are differences in the surfaces and application to paper, canvas etc. With gouache the colour lies on the surface of the paper, particles become enmeshed in the fibres. Gouache can be mixed with oils, acrylic and water colour. Titanium white is particularly useful to have to “touch up”. Chinese white is often added to transparent water colour to make it opaque. Turner used this method very effectively on tinted paper.

### LIBRARY

Pamela Kay – A Personal View – Gouache

(Acrylic 33)

This book is well worth a read, drawing on her experience as a successful artist emphasizing a “How I Do It” not “How To Do It”. The most direct advice is to paint what you SEE and trust what your EYE is showing you. Numerous paintings are published with interesting explanations of the whyfor, particularly with still life.

Learn To Paint Gouache - Moira Huntly

(Acrylic 34)

Again describing the basic techniques of gouache with practical exercise and step by step demonstrations, equipment, papers and palette.

DVD - Water Media Techniques - Stephen Quiller - Watercolour and Gouache (DVD 35)

Best known for use of colour, colour therapy and his approach to water media painting i.e. Watercolour, gouache and acrylic. An artist educator and author demonstrating in this DVD landscape painting starting with a colour study combining watercolour and gouache.

### ATTENTION BORROWERS:

On the shelf in the office there are 3 files.

- 1) Books and Magazines: Please note that EACH media has its own sheet i.e. Drawing, pastel etc with colour coding. Note on the sheet the book code, name of book, legible name of borrower, date and witness signature. On return – date and witness
- 2) CDs: As above with the signing out of books but with a \$2 fee.
- 3) Reference File: This is an entire listing of the books available for borrowing. If you are looking for something specific in any particular media we may have it!

*Audrey Naismith, Librarian*

---

## ART IN THE PARK & ON THE STRAND



### NO COSTS – NO COMMISSION

Great opportunities for members of the Tauranga Society of Artists Inc to display & sell your art, mix with your fellow artists, and interact with the public – local, from other areas of New Zealand, and overseas.

### DATES FOR SEPTEMBER 2020 – JUNE 2021

MONTH	ART in PARK (SATURDAYS)	ART on STRAND (SUNDAYS) Please note change
<b>2020:</b>		
SEPTEMBER	SATURDAY 12 <sup>th</sup> and 26 <sup>th</sup>	SUNDAY 6 <sup>th</sup> and 20 <sup>th</sup>
OCTOBER	SATURDAY 10 <sup>th</sup> and 24 <sup>th</sup> and 31 <sup>st</sup>	SUNDAY 4 <sup>th</sup> and 18 <sup>th</sup>
NOVEMBER	SATURDAY 14 <sup>th</sup> and 28 <sup>th</sup>	SUNDAY 8 <sup>th</sup> and 22 <sup>nd</sup>
DECEMBER	SATURDAY 12 <sup>th</sup> and 19 <sup>th</sup>	SUNDAY 6 <sup>th</sup> and 27 <sup>th</sup>
<b>2021:</b>		
JANUARY	SATURDAY 9 <sup>th</sup> and 23 <sup>rd</sup> and 30 <sup>th</sup>	SUNDAY 3 <sup>rd</sup> and 17 <sup>th</sup>
FEBRUARY	SATURDAY 13 <sup>th</sup> and 27 <sup>th</sup>	SUNDAY 7 <sup>th</sup> and 21 <sup>st</sup>
MARCH	SATURDAY 13 <sup>th</sup> and 27 <sup>th</sup>	SUNDAY 7 <sup>th</sup> and 21 <sup>st</sup>
APRIL	SATURDAY 3 <sup>rd</sup> and 10 <sup>th</sup> and 24 <sup>th</sup>	SUNDAY 18 <sup>th</sup>
MAY	SATURDAY 8 <sup>th</sup> and 22 <sup>nd</sup>	SUNDAY 2 <sup>nd</sup> and 16 <sup>th</sup>
JUNE	SATURDAY 12 <sup>th</sup> and 26 <sup>th</sup>	SUNDAY 6 <sup>th</sup> and 20 <sup>th</sup>

#### PLEASE NOTE:

- **Set up time** is from 8am and **end time** is before 5pm.
- **During winter months:** Set up is a little later – from 9am, and end time earlier dependent on weather conditions.
- If Council makes any changes to the above dates you will be advised by group email.

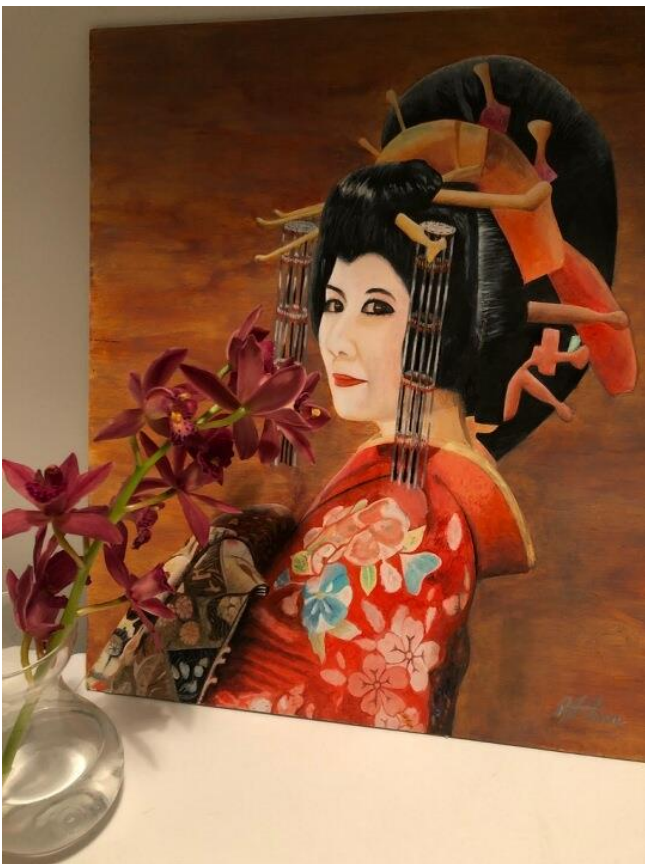
## WEDNESDAY AFTERNOON SESSION

It has been great to be involved with the Wednesday afternoon group, this has given me great pleasure to be working alongside such wonderful artists. Their advice is always welcome as I feel that I can never stop learning. We have some very talented artists that are only too happy to help people with their art. I think that it is a wonderful thing however we must be mindful that some people do not necessarily want help so we need to make sure that our advice is welcome.

It never ceases to amaze me how people can see things so differently and this is reflected in their attitude towards their art. I find this refreshing and inspirational particularly being inspired with wonderful artists. The kindness that the group showed to one and another is quite humbling and I respect the entire group greatly.

My advice to anybody starting to paint is to find a subject that you really want to paint as it is hard to be excited about something which is not very interesting. For a beginner it is a good idea to find an artist that does the type of painting you like and uses the media which you wish to work with. I am sure that anybody would be helpful to you to get you started and working in a buddy system with one person rather than a whole lot of people giving their advice is much simpler. It is far better to be learning the fundamentals of painting for a start than to struggle to establish a good technique using the right type of brushes. I mentioned brushes because I have found using a particular type of brush has improved my art dramatically.

I have included a picture of a painting that I recently painted using flat brushes and as well as a picture of the flat brushes which cost only a few dollars to buy. When they get bristly I throw them away and get another set. I also use large flat brushes which are much more expensive however they are more durable. I think that we can learn from an experienced artist in a few minutes what could take some considerable time experimenting ourselves. The most important thing is to enjoy your art and as I said before I am only too happy to help anybody with their art.



*Richard Fenn, convenor*



## PAINTING SCHOOL

Painting School: 1st and 3rd Wednesday mornings of each month. (Sessions are fully booked.)

### Session news:

Wednesday Painting Group. August 2020



Over the last couple of weeks, we have been painting from our own subject choice and material, with excellent results. We still concentrate on developing whatever skills are needed to get the job done in the art rooms with backup from the follow up notes, which are just responding to questions during session time and explanations to some of those tricky art terms in a much simpler way.

New to the notes is 'My studio'. A 'show and tell' of what I am up to, with some practical tips on how to get out of trouble rather than start again.

Many of the group have created some amazing work in other mediums before coming along to these sessions. Thanks for trying out Acrylics. I really enjoy helping you come to grips with new ideas & mediums, because I sense you really want to become good artists. Thank you for coming along .

*Graham Baker, convenor*

## ARTIST OF THE MONTH: PASTEL GROUP

In September and October artworks displayed in the art rooms will be by various members of the bi-monthly Monday Pastel Sessions rather than an individual artist. See the Pastel sessions words next in the newsletter for more details.

**Artist of the month** is an opportunity for members to have 5 pieces of their artwork hung for display in the Society rooms for a month. Anyone can participate. If you would like to have your work on show in the future (don't be shy), [contact Bev Montgomery by email at taurangaartsociety@xtra.co.nz](mailto:taurangaartsociety@xtra.co.nz)

## PASTEL SESSIONS

Greetings. Over the next couple of months - through September and October - you will be seeing around the art rooms artworks hung by various members of the bi-monthly Monday Pastel Sessions. Everyone who attends has been offered the opportunity to hang at least one painting in order for you to see the bold and delicate styles, the different subjects and the artistic range that this medium can produce.

Almost any surface that can hold a chalk mark is capable of being painted on in pastel.

We mainly use paper products with a 'tooth' or 'texture' which holds and retains the pigment, creating the marks on the paper. Sugar paper, sand grained Art Spectrum Colour Fix Paper or tinted Canson Paper as well as watercolour paper can all be used. Brian Frank brought into a session a while ago some interesting coloured Flock sheets of paper for us to try, which is quite a different technique of painting compared to the papers mentioned.

Unlike colour manufacturer's ranges in oil, watercolour or acrylic paints there are no agreed standards of colour nomenclature and hue in pastel colours. There are available for sale sets of pastels put together by a specific well-known artist, through a manufacturer, and labelled as that artist's range of *portrait*, *landscape* or *seascape* colours, for example, and purchased as a boxed set. Often a colour has a variety of hues to help with the blending or merging of colours, so one can never have enough pastels!

Look around the rooms and see for yourself the results that come out of our sessions and if you like the look of the work or would like to try the medium do come along on the first and third Mondays— we are happy to share our knowledge with you.

Best wishes

*Mary McTavish, Pastel Convenor*

*PANZ Rep for BOP*

## PORTRAITURE

**“Drawing is the honesty of the art. There is no possibility of cheating. It is either good or bad.”**  
Salvador Dali



We had another young model (Jade Baxter) for our first session in August. The faces of young teenagers are perhaps the most difficult to draw. Adults have unique characteristics such as imperfections, lines and angularities that are a great guide when drawing their portraits.

Jade however had the opposite, a lovely smooth complexion which required careful observation before shading in the contours and our members responded superbly. It's great to see how each member is now trying to accurately set up their drawings. I stress the importance of this. Plotting the position of key features such as eyes, corners of the mouth etc is the correct foundation for a successful drawing.

Our second Wednesday for August began with a critique session. This was followed by members drawing each other's noses. Not an easy task when this familiar facial feature is separated from the eyes and the mouth. \_





## END-OF-YEAR COMPETITIONS- ADVANCE NOTICE

We are holding the end of the year competitions on **Saturday 12<sup>th</sup> of December**.

We encourage you to enter an art work / painting in this event. Below are the categories for the competition:

1. **Marie Peters Millennium Cup: Best Pastel**
2. **Grace Walsh Trophy: Best Oil**
3. **Georgia Don Memorial Cup: Best Acrylic**
4. **Marge Martin Salver: Tauranga Scene**
5. **Caster Brothers Award: Best Watercolour** (Tube, cake or pencil)
6. **Cam Burgoyne Thomas Memorial Award & Keith Corner Memorial Trophy: Best Abstract**  
(Does not depict a person, place or thing in the natural world)
7. **Jensen Trophy: Best Coloured Pencil** (no washes)
8. **Contemporary Art Trophy: Best Contemporary Art** (art of today/reflecting modern day life)
9. **Reg Charman Memorial Cup: President's Choice - "The Beauty of Nature" theme**
10. **President's Trophy: Best Emerging Artist - "What's Above Me" theme**

(Up to 2 years as an artist not just 2 years at TSA, OR an artist who has not won an Award or a Merit at TSA Club competitions previously)

**Please bring your paintings to the Elizabeth Street, Community Centre between 9:00 & 9:30 am.**

Remember to cover your name on the front of your work and have a swinging tag attached to the back, stating your name, the title of your work and the category your art is to be entered. Also write your name on the back of the painting in case the swing tag comes off.

### COMPETITION RULES:

1. All entries to have been completed within the 12 months prior to the competition.
2. Entries must be entirely the member's own work and not done in a class of instruction, or copied from publications or photographs taken by other people without their written permission.
3. Entries must be presented in a finished, dry condition, framed or otherwise finished, ready to hanging. This requires "D" rings and cord, or finished in a stable mount with a rigid backing – able to be supported and hung.
4. Airbrushed works of art will be accepted as airbrushed in its Medium category. If a painting is part airbrushed and part painting it must be labelled as Mixed Media/ Airbrush in its Medium Category.
5. All entries must have the name of the member, and the category/ competition being entered, on a swinging tag long enough to hang over the top and hang in front of the painting, securely attached at the back. The members signature to be covered on the front.
6. **One entry per person category** will be accepted, unless stated by the competition coordinator.
7. Members can enter in absentia if another member presents and collects their work.
8. All competing members must be financial.
9. The committee reserves the right to reject any entry that does not meet the above criteria.
10. All entries will be displayed on the Society's Exhibition Screens - No easels are used.
11. All entries are to remain on display until 12:30pm. Artists may collect their paintings after 12:30pm.

**PROGRAMME:**

<b>SEPTEMBER 2020</b>	
<b>Monday Morning</b>	
7	Pastels Mary McTavish - Convenor
14	Drawing Audrey Naismith - Convenor
21	Pastels Mary McTavish - Convenor
28	Drawing Audrey Naismith - Convenor
<b>Monday Afternoon</b>	
7	Pastels Mary McTavish - Convenor
14	Drawing Audrey Naismith - Convenor
21	Pastels Mary McTavish - Convenor
28	Drawing continuing from morning session
<b>Tuesday Morning</b>	
1	'Open Studio' If you would like a friendly place to paint meet at the Society rooms – any medium
8	'Open Studio' If you would like a friendly place to paint meet at the Society rooms – any medium
15	'Open Studio' If you would like a friendly place to paint meet at the Society rooms – any medium
22	'Open Studio' If you would like a friendly place to paint meet at the Society rooms – any medium
29	'Open Studio' If you would like a friendly place to paint meet at the Society rooms – any medium
<b>Tuesday Afternoon</b>	
1	
8	<b>Exhibition Sub Committee Meeting 1pm</b>
15	
22	
29	
<b>Tuesday Evening</b>	
1	Practical Art any medium – all welcome – Steve Cordery
8	Practical Art any medium – all welcome – Steve Cordery
15	Practical Art any medium – all welcome – Steve Cordery
22	Practical Art any medium – all welcome – Steve Cordery
29	Practical Art any medium – all welcome – Steve Cordery
<b>Wednesday Morning</b>	
<b>Rooms open 9.30 – 12.00 am.</b>	
2	Painting School with Graham Baker - Cost \$5 per person
9	Portraiture with Robin Purllant – Cost \$5 per person
16	Painting School with Graham Baker - Cost \$5 per person
23	Portraiture with Robin Purllant
30	
<b>Wednesday Afternoon</b>	
2	Open Studio – Acrylics and other medium – help offered if needed - Richard Fenn
9	Open Studio – Acrylics and other medium – help offered if needed - Richard Fenn
16	Open Studio – Acrylics and other medium – help offered if needed - Richard Fenn
23	Open Studio – Acrylics and other medium – help offered if needed - Richard Fenn
30	Open Studio – Acrylics and other medium – help offered if needed - Richard Fenn
<b>Thursday Morning</b>	
<b>9.30 – 12.00</b>	
3	Oil Painting plus other medium with Karen
10	Oil Painting plus other medium with Karen
17	Oil Painting plus other medium with Karen
24	Oil Painting plus other medium with Karen
<b>Thursday Afternoon</b>	
3	
10	
17	<b>Executive Committee Meeting 12.30 – 3.30pm</b>
24	
<b>Friday Morning</b>	
<b>9.30 – 12.00</b>	
4	Life Drawing. Cost \$10.00 with Tanya Bamford King
11	U3A
18	Life Drawing. Cost \$10.00 with Tanya Bamford King
25	U3A
<b>Friday Afternoon</b>	
11	<b>Programme &amp; Competitions Sub Committee Meeting 1 pm</b>
<b>Saturday 12 - 9.00am – 4.00pm</b>	
<b>Maxine Thompson's Pastel Workshop</b>	
<b>Sunday 13 - 9.00am – 4.00pm</b>	
<b>Maxine Thompson's Pastel Workshop</b>	

# You are invited ...



# SUPREME ART AWARD

and original

# ART EXPO

**Thursday 1st - Sunday 4th October**

**NEW** Tiny Art category

**NEW** Painting and Drawing demonstrations each day

**Tauranga  
Boys' College  
Gymnasium**

Entrance: corner of  
14th Avenue &  
Devonport Road

Plenty of Parking close to venue

## Exhibition Times

Thursday 1st October 9.30 - 5.00pm  
Friday 2nd October 9.30am - 5.00pm  
Saturday 3rd October 9.30am - 5.00pm  
Sunday 4th October 9.30am - 4.00pm

All Artwork may be purchased

Payment options: cash/eftpos/cheque

**PROUDLY SPONSORED BY**

**HEARTLAND**  
BANK

**paperplus**  
BETHLEHEM



**FARMER  
AUTOVILLAGE®**  
We Sell Cars. But we love drivers.

**HARRISON FRAMES**

