



ART • PEOPLE • PASSION

## NEWSLETTER & PROGRAMME

### AUGUST 2020

LOCATION: 171A Elizabeth St. West

PHONE: 07 5716859

EMAIL: [taurangaartsociety@xtra.co.nz](mailto:taurangaartsociety@xtra.co.nz)FACEBOOK: [Tauranga Society of Artists](https://www.facebook.com/TaurangaSocietyofArtists)WEBSITE: [www.taurangasocietyofartists.org.nz](http://www.taurangasocietyofartists.org.nz)

### 2020/2021 COMMITTEE

**President:** Debbie Clarke 027 496 1752**Vice President:** Adrian Muller 07 542 2167**Secretary:** Carol King 07 576 1891**Treasurer:** Lynn Webb 027 945 0275**Newsletter Editor:** Alison Underwood 021 2500 504

John Campbell 021 663 355

Bev Montgomery 07 570 3358

Wendy Fullerton 027 330 3698

Jitske Schokking 07 576 5894

Kinsa Hays 021 864 654

### ADVANCE NOTICE 2020 – Mark your diaries!

**Thursday 1 to Sun 4 October**

Supreme Art Awards and Expo (setup &amp; opening on Wednesday 30 September)

**Thursday 19 to Sunday 22 November**

Garden and Art Fest Expo

**Saturday 12 December**

End-of-year competitions

### FROM THE PRESIDENT

Hello everyone,

Firstly, a big congratulations to the merit and trophy winners at our mid-year competitions. Great to see such a collection of amazing artworks. Thank you for the planning, time, efforts and skill put into your artwork. Congratulations too to first time competitors. I understand the anxiety that can precede an event like this and hope the pluses were greater than the negatives. Thank you to Karen Pritchard, the Programme and Competitions sub-committee and all the helpers who made this day such a success.

Our next big event is the Expo 29 September-4 October. This will include the Supreme Award section that we normally have mid-year and a new Section called Tiny Art. The size of each artwork is limited to 15cm x 15 cm (not including frame). Each artist may enter up to 3 Tiny Artworks over and above their other paintings. Entry packs will be available in the Art Room on 12 August. (More details later in Newsletter).

Winter is a great time for tucking inside in the warmth to paint and learn new stuff. I am constantly amazed at what is available on YouTube and the Internet. I have signed on to an online watercolour workshop next week - unfortunately I have to get up at 4.00am to do it and be in sync with American time zones. I'm going to be learning how to paint copper pots.

Have a great month, happy painting

**Debbie Clarke, President**

0274 961 752

[debbie.clarke@landmarkhomes.co.nz](mailto:debbie.clarke@landmarkhomes.co.nz)

## NOTICES

### WELCOME TO NEW MEMBERS

We are pleased to welcome Janeen George who has joined the Society recently.

*Executive Committee, Tauranga Society of Artists*

---

## PROGRAMME AND COMPETITIONS SUB-COMMITTEE

It was good to welcome new members to the group this week. New members include: Kinsa Hays, Jenny Roberts and Lyn Watts, who will shadow our departing members for the mid-year competitions and then take over for the next competitions on 12th of December. Malcolm Drysdale is joining us to co-ordinate the set-up of the room for judging and presentation seating.

**Workshops** - Joan O'Connor continues her Thursday afternoon workshops on the 6th and 13th of August. On the 27th August Joan will be holding an additional free session for those who have taken this course to evaluate the results.

Mary has arranged Maxine Thompson (a pastel tutor) for weekend workshops in both September and October. Details are following in this newsletter. Expression of interest sheets are in the rooms for members to sign up. The fee for each weekend workshop is \$145 per person. We do need a minimum of 10 people to attend.

*Karen Pritchard, Kinsa Hays, Jenny Roberts and Lyn Watts*

---

### JOAN O'CONNOR'S WORKSHOP: 'DRAWING BIG'

**6<sup>th</sup> and 13<sup>th</sup> August, 12.30 to 4pm**

**The fee is \$90 for the 7- hour workshop, which takes place over two days. There will be a critique session on 27 August for the participants of the workshop.**

(Pen, Pencil, Pen and Ink with a hint of colour in watercolour or acrylic)

Drawing objects oversize, freeing movement, imagination, creates a wow factor.

You will study your subject, draw, create, a pleasing design to fill your support, being aware of negative spaces, contrast, dimensions, perspective.

Lots of fun, thinking, getting your creative juices going. I will bring along 'things' for your use, or bring along what you may have in mind.

What to bring: sketching pad, a pad of A3 drawing or watercolour paper, graphite, soft and hard pencil, acrylics or watercolours, craft glue, scissors, brushes, ink pens, charcoal. Pastels. Fixative.

Looking forward to seeing you. Don't hesitate to call me with any queries you may have.

***Joan O'Connor, 0273220342. [Joanlucy47@gmail.com](mailto:Joanlucy47@gmail.com)***

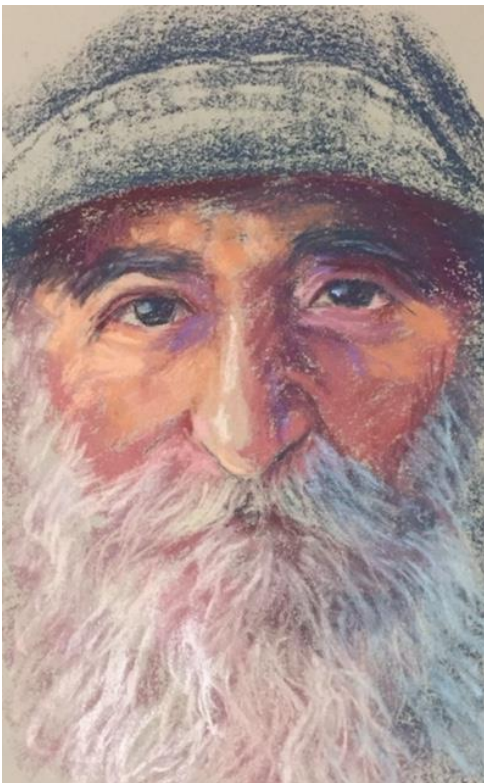
---



## MAXINE THOMPSON'S PASTEL WORKSHOP:

### 'Portraits – "Where to Start and the Process"'

This two-day workshop will be held on Saturday 12<sup>th</sup> & Sunday 13<sup>th</sup> September. The hours are 9.00am – 4.00pm. The cost for the two days is \$145 per person.



## MAXINE THOMPSON'S PASTEL WORKSHOP: "Wild Life in Pastel"

This is also a two-day workshop and will be held on Saturday 17<sup>th</sup> and Sunday 18<sup>th</sup> October. The hours are 9.00am – 4.00pm. The cost for the two days is \$145 per person.

---

Thursday 1st to Sunday 4 October - Supreme Art Awards and Expo

# Start Painting NOW!

## SUPREME ART AWARD

and original

## ART EXPO

**Thursday 1st - Sunday 4th October 2020**

**Tauranga Boys College Gymnasium**  
**Corner 14th Ave and Devonport Rd**




Entry Packs  
available  
in Clubrooms  
12th August

**You can enter up to 5 pieces**  
ONE entry may be entered into the **Supreme Art Award**. None of the 5 entries can have been entered in the 2019 Art Expos or Supreme Art Award.

**IMPORTANT** - All your paintings must fit on one stand measuring 2.4 metres x 1.2 metres.

**NEW**  
Tiny Art category

**NEW**  
Painting and Drawing demonstrations each day

Full details in Entry Pack

**Date entries close:**  
Closing date for receipt of entries is Friday 11th September 5pm.

**The costs:**  
\$30 Non-refundable Fee regardless of how many pieces you enter.  
 20% Commission.

# RULES




## SUPREME ART AWARD

and original

## ART EXPO

Tauranga Boys College Gymnasium  
 Corner 14th Ave & Devonport Rd

Thursday 1st - Sunday 4th October 2020  
 Set Up & Opening Wednesday 30th September

**YOU CAN ENTER UP TO 5 PIECES - One** of the entries may be entered into the **Supreme Art Award**. None of the 5 entries can have been entered in the 2019 Art Expos or Supreme Art Award.

- **IMPORTANT** - All your paintings must fit on one stand measuring 2.4 metres x 1.2 metres. We advise you to measure this area out and make sure your paintings will fit within this area. (The Society reserves the right to exclude paintings if they do not fit).
- **NEW TINY ART CATEGORY** This category is for paintings that are **150mm x 150mm** or less. The total area of each artwork not to exceed **225cm<sup>2</sup>** (frame and matte can be extra to this) with a price cap of \$150. **Three paintings may be entered.**

Please Note: the 3 Tiny Art entries are **OVER AND ABOVE** your 5 allowed paintings and display stand area.

## ART IN THE PARK & ON THE STRAND



### NO COSTS – NO COMMISSION

Great opportunities for members of the Tauranga Society of Artists Inc to display & sell your art, mix with your fellow artists, and interact with the public – local, from other areas of New Zealand, and overseas.

### DATES FOR AUGUST 2020 – JUNE 2021

MONTH	ART in PARK (SATURDAYS)	ART on STRAND (SUNDAYS) Please note change
<b>2020:</b>		
AUGUST	SATURDAY 8 <sup>th</sup> and 22 <sup>nd</sup>	SUNDAY 2 <sup>nd</sup> and 16 <sup>th</sup>
SEPTEMBER	SATURDAY 12 <sup>th</sup> and 26 <sup>th</sup>	SUNDAY 6 <sup>th</sup> and 20 <sup>th</sup>
OCTOBER	SATURDAY 10 <sup>th</sup> and 24 <sup>th</sup> and 31 <sup>st</sup>	SUNDAY 4 <sup>th</sup> and 18 <sup>th</sup>
NOVEMBER	SATURDAY 14 <sup>th</sup> and 28 <sup>th</sup>	SUNDAY 8 <sup>th</sup> and 22 <sup>nd</sup>
DECEMBER	SATURDAY 12 <sup>th</sup> and 19 <sup>th</sup>	SUNDAY 6 <sup>th</sup> and 27 <sup>th</sup>
<b>2021:</b>		
JANUARY	SATURDAY 9 <sup>th</sup> and 23 <sup>rd</sup> and 30 <sup>th</sup>	SUNDAY 3 <sup>rd</sup> and 17 <sup>th</sup>
FEBRUARY	SATURDAY 13 <sup>th</sup> and 27 <sup>th</sup>	SUNDAY 7 <sup>th</sup> and 21 <sup>st</sup>
MARCH	SATURDAY 13 <sup>th</sup> and 27 <sup>th</sup>	SUNDAY 7 <sup>th</sup> and 21 <sup>st</sup>
APRIL	SATURDAY 3 <sup>rd</sup> and 10 <sup>th</sup> and 24 <sup>th</sup>	SUNDAY 18 <sup>th</sup>
MAY	SATURDAY 8 <sup>th</sup> and 22 <sup>nd</sup>	SUNDAY 2 <sup>nd</sup> and 16 <sup>th</sup>
JUNE	SATURDAY 12 <sup>th</sup> and 26 <sup>th</sup>	SUNDAY 6 <sup>th</sup> and 20 <sup>th</sup>

#### PLEASE NOTE:

- **Set up time** is from 8am and **end time** is before 5pm.
- **During winter months:** Set up is a little later – from 9am, and end time earlier dependent on weather conditions.
- If Council makes any changes to the above dates you will be advised by group email.

## FACEBOOK & INSTAGRAM



<https://www.facebook.com/taurangasocietyofartists/>



Our Instagram id is @taurangaartsoc

### Facebook Update

Are you exhibiting somewhere, have you attended a good local exhibition? Have you just completed a masterpiece? Are you running a workshop? Do you have a home gallery?

Send me details so we can give it a shout out on our FB page...

[Christiecramerart@gmail.com](mailto:Christiecramerart@gmail.com)

*Christie Cramer, Facebook & Instagram Admin*

---

## LIBRARY NEWS

### PAINTING FIGURES

Stone age cave painters were history's first primitive figurative artists. Most of the Italian Old Masters were extremely skilled in figure painting. When figures are incorporated in paintings, we need to portray the clothes or nude figure with the intended action, pose, relevant to the composition, perception of gravity and movement. Emotions, situations and circumstances articulated may be portrayed by a simple background balanced shape to help give a sense of depth and activity.

HOW TO CAPTURE MOVEMENT IN YOUR PAINTINGS - Julia Cassels (Drawing 14)

Julia is a professional wild life artist, working from life to portray her subjects, be it the human figure, animals, landscapes etc. In this particular book Julia covers a variety of media, compositions analysing a subject in forms of shape, brushwork and colour.

THE BEGINNERS GUIDE TO DRAWING PEOPLE - Step by step techniques for beginners. (Drawing 48)  
An in-depth guide covering figure drawing, human anatomy and the female nude.

CD - DRAWING AND PAINTING PEOPLE - John Raynes (CD drawing 2)

John Rayne has written 16 instructional books on drawing, seascapes, landscapes, the human anatomy and in particular portraiture. This CD has specifically explained and easy to follow demonstrations. The CD includes demonstrations of drawing realistic and accurately positioned people for example, distribution of weight and establishing the centre of gravity for accurate poses.

CD - DRAWING THE CLOTHED FIGURE - Joy Thomas (CD drawing 4)

Predominantly a portrait artist, this CD is styled as a workshop, showing in detail the materials and methods for a clothes model in charcoal, emphasis being on composition, proportion, mood and light. How to draw textures of drapery, folds, accessories and hair.

The CD's have \$2.00 fee, of loan for 3 weeks. If in doubt the class coordinator will help.

*Audrey Naismith, Librarian*

---

## ARTIST OF THE MONTH: BRUCE HUTCHINSON

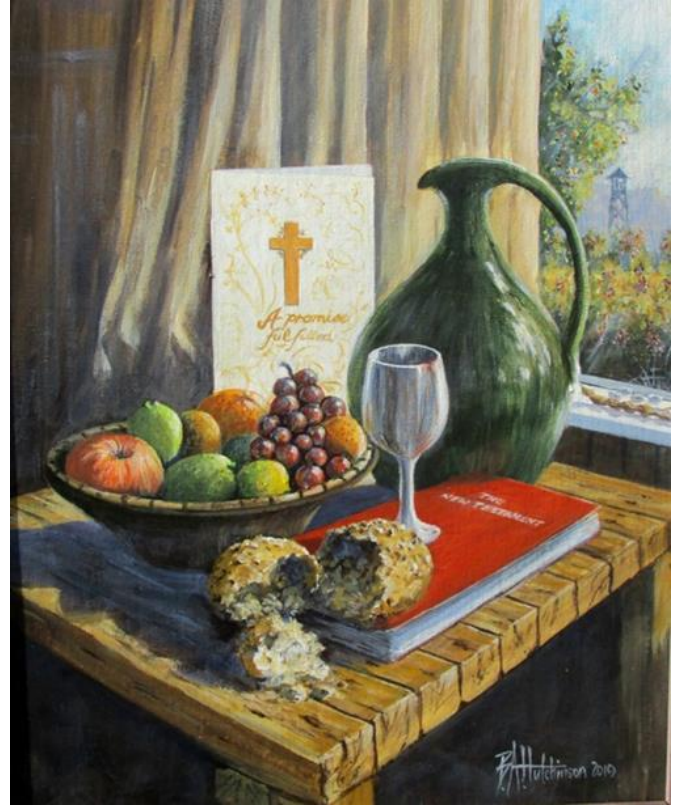
Bruce Hutchinson has been painting and drawing for more than 40 years, alternating between careers in newspaper journalism and as a self-employed landscape artist and illustrator based in Blenheim, Tauranga, Christchurch and Cambodia. He gained his early art training in Wellington while working for an agency in Wellington and attending night classes in illustration and design.

Bruce seeks to capture the spirit and character of New Zealand's landforms, vistas, colours and the interaction between nature and man in a way that ordinary people can relate to and live with.

A multiple award-winner at TSA competitions, Bruce, now 75, has completed hundreds of private commissions for clients throughout New Zealand and some overseas, including five books on historic, rural subjects, and has exhibited widely, often at rural events such as A&P shows, combining displays with painting demonstrations, as well as workshops for a number of art societies.

His works on display in the art rooms reflect his versatility in handling a variety of mediums and styles. All his work is produced using his own photos and sketches done on location, while he enjoys painting and sketching en plein air when possible to study his subjects in detail and to capture the atmosphere and best light.

He enjoys the camaraderie and interaction with other artists in the society in "retirement mode", and is a regular at both portrait and open painting sessions on Wednesdays, always learning new tricks and helping others to build up their confidence and skills through his own experiences.



*"A promise Fulfilled", a still life in acrylics, illustrates the deep meaning in recognisable symbolism of the Christian communion – a celebration of the "fruit" of faith that grows in the life of believers on their journey through the seasons of life.*

**Artist of the month** is an opportunity for members to have 5 pieces of their artwork hung for display in the Society rooms for a month. Anyone can participate. If you would like to have your work on show in the future (don't be shy), [contact Bev Montgomery by email at taurangaartsociety@xtra.co.nz](mailto:bevmontgomery@taurangaartsociety.xtra.co.nz)

---

## SESSION LEADERS

- Monday am/pm, 1<sup>st</sup> and 3<sup>rd</sup> week -- **PASTELS** -- Mary McTavish, [jhmemcts@gmail.com](mailto:jhmemcts@gmail.com)
- Monday am/pm, 2<sup>nd</sup> and 4<sup>th</sup> week -- **DRAWING** -- Audrey Naismith, 544 3068
- Tuesday am -- **OPEN STUDIO** -- Deb Clarke (for now), 027 496 1752
- Tuesday evening -- **OPEN STUDIO** -- Steve Cordery, 027 510 6669
- Wednesday am, 1<sup>st</sup> and 3<sup>rd</sup> week -- **ART SCHOOL** -- Graham Baker, 022 488 0786
- Wednesday am, 2<sup>nd</sup> and 4<sup>th</sup> week -- **PORTRAITURE** -- Robin Purlant, [rpurlant@gmail.com](mailto:rpurlant@gmail.com)
- Wednesday pm -- **OPEN STUDIO** -- Richard Fenn, 577 1644 or 027 245 1741
- Thursday am -- **OPEN STUDIO OILS** -- Karen Pritchard, 544 6574 or 021 197.3737
- Friday am -- **LIFE DRAWING** -- Tanya Bamford King, 021 271 2493

*Members are welcome to attend advertised sessions  
but bookings are required for Painting School and the first Portraiture session each month*

---

## PAINTING SCHOOL

**Painting School: 1st and 3rd Wednesday mornings of each month. (Sessions are fully booked.)**

### Session news:

During the first session of the month we went over the last one of our 'group of four' Acrylic paintings and the team have been working away at that, during the second session of the month in my absence.

I have seen some of the results and I can see most of us are using my painting as reference only. Not trying to copy it stroke for stroke. Instead putting their own interpretation into their painting, using the techniques they have been experimenting with up till now. That is great.

Our follow up notes contained the steps to complete the last painting along with sections on detailing, varnishing, an explanation of a couple of art terms and answers to questions that were better included in the notes.

From now on our group will be working on their own creations, applying many of the ideas that popped up in the demonstration paintings. Their choice of subject, substrate and planning as part of the programme, while I will be helping with ideas and examples, one on one.

Nearly there, I have not put the vegetation in yet just shapes and shadows.

*Graham Baker, convenor*




---

## PASTEL SESSIONS

It is great to be part of such a lively and supportive group of people. We are big in numbers and output!! There are lots of varying pastel projects on the go which is great to see.

Thanks to **Brian Frank** for bringing in some Suede sheets of pastel paper for us to try out, as well as our amazing **Maxine Thompson** who again carted all her Pastel Shop "items" in to our rooms for us to have a drool over. Some serious purchases were made.

Maxine has offered to come and show us **how and where to start on a portrait and the process along the way** which will be a two-day workshop in September on the 12<sup>th</sup> & 13<sup>th</sup>. Details for this workshop are already in the foyer at the rooms. Also, she is coming to show us **how to draw Wildlife** which can be anything on four or more legs on October 17<sup>th</sup> & 18<sup>th</sup>. Details now available in the foyer.

Please come along and support these workshops as we always learn something from them and they are always great fun.

You will have a treat in September and October as we, as a group, have been asked to display pastel paintings at the rooms. There are already over 10 of our session attendees who are going to be showing their work and I will be asking everyone to put up something so that you can see what can be achieved with this medium. Enjoy.

Best wishes

*Mary McTavish, Pastel Convenor*

*PANZ Rep for BOP*

---

## PORTRAITURE

**“ Learning to draw is really a matter of learning to see correctly, and that means a good deal more than merely looking with the eye.” Kimon Nicolaides**

Our first session for July was a real challenge. We had a young Maori girl (Kys Paez) who has a natural beauty and was the perfect model. She barely moved during a concentrated session of drawing. Young people are perhaps the most difficult to draw and our members accepted the challenge producing some wonderful drawings.

At each session I always encourage everyone to look extremely carefully at the model before starting to draw. Keen observation is the starting point to an understanding of what you are drawing which ultimately leads to a more accurate and satisfying result.

Our second session for the month was devoted to drawing 'eyes'. I provided an instruction sheet for each member which demonstrated the steps needed to draw eyes accurately. We then split into groups to draw each other's 'eyes'.



*Robin Purllant, convenor*

## MID-YEAR COMPETITIONS

Thank you to all those who helped at the mid-year competitions. It was a wonderful team effort and a great day. There were 109 paintings entered in the nine categories. The judge was local artist Wayne Vickers.



**Best Still Life: Richard Perkins Memorial Trophy**

Winner: Debbie Clarke

Merit awards: Robyn Purllant and Christie Cramer



**Best Landscape: Eric Hussey Cup**

Winner: Debbie Clarke

Merit awards: Christie Cramer and Alison Underwood



**Best Seascape: Eric Hussey Cup**

Winner: Alison Underwood

Merit awards: Sue Jones and Debbie Clarke



**Best Portraiture: Thelma Graham Plate**

Winner: Robin Purllant

Merit awards: Debbie Clarke & Lyn Watts



**Best Pencil Drawing: Joan Lushington Sketch Trophy**

Winner: Christie Cramer

Merit awards: Bernadette Toye and Robin Purllant



**Best Black & White: Reg Chalmers Memorial Rose Bowl**

Winner: Bruce Hutchinson

Merit awards: June MacKenzie and Robin Purllant



**Best Mixed Media: Dale Mitchell Memorial Cup**

Winner: Rowena Ashman

Merit awards: June MacKenzie and Marilyn Muirhead



**Best Figure Study: Ray Thompson "la Vie" Trophy**

Winner: Lyn Watts

Merit awards: Robin Purllant and Heather Giles



**Best Pen and Ink: McTavish Trophy**

Winner: Bernadette Toye

Merit awards: Debbie Clarke and Lyn Watts

## PROGRAMME:

<b>AUGUST 2020</b>	
<b>Monday Morning</b>	
	<b>9.30 – 12.00</b>
3	Pastels Mary McTavish - Convenor
10	Drawing Audrey Naismith - Convenor
17	Pastels Mary McTavish - Convenor
24	Drawing Audrey Naismith - Convenor
<b>Monday Afternoon</b>	
	<b>12.00 – 4.00</b>
3	Pastels Mary McTavish - Convenor
10	Drawing Audrey Naismith - Convenor
17	Pastels Mary McTavish - Convenor
24	Drawing continuing from morning session
<b>Tuesday Morning</b>	
	<b>9.30 – 12.00</b>
4	'Open Studio' If you would like a friendly place to paint meet at the Society rooms – any medium
11	'Open Studio' If you would like a friendly place to paint meet at the Society rooms – any medium
18	'Open Studio' If you would like a friendly place to paint meet at the Society rooms – any medium
25	'Open Studio' If you would like a friendly place to paint meet at the Society rooms – any medium
<b>Tuesday Afternoon</b>	
4	
11	<b>Exhibition Sub Committee Meeting 1pm</b>
18	
25	
<b>Tuesday Evening</b>	
	<b>7.00 – 9.00</b>
4	Practical Art any medium – all welcome – Steve Cordery
11	Practical Art any medium – all welcome – Steve Cordery
18	Practical Art any medium – all welcome – Steve Cordery
25	Practical Art any medium – all welcome – Steve Cordery
<b>Wednesday Morning</b>	
	<b>Rooms open 9.30 – 12.00 am.</b>
5	Painting School with Graham Baker - Cost \$5 per person
12	Portraiture with Robin Purlant – Cost \$5 per person
19	Painting School with Graham Baker - Cost \$5 per person
26	Portraiture with Robin Purlant
<b>Wednesday Afternoon</b>	
	<b>12.00 – 4.00</b>
5	Open Studio – Acrylics and other medium – help offered if needed - Richard Fenn
12	Open Studio – Acrylics and other medium – help offered if needed - Richard Fenn
19	Open Studio – Acrylics and other medium – help offered if needed - Richard Fenn
26	Open Studio – Acrylics and other medium – help offered if needed - Richard Fenn
<b>Thursday Morning</b>	
	<b>9.30 – 12.00</b>
6	Oil Painting plus other medium with Karen
13	Oil Painting plus other medium with Karen
20	Oil Painting plus other medium with Karen
27	Oil Painting plus other medium with Karen
<b>Thursday Afternoon</b>	
6	Joan O'Connor- 'Drawing Big Workshop' 12.30pm – 4pm
13	Joan O'Connor- 'Drawing Big Workshop' 12.30pm – 4pm
20	<b>Executive Committee Meeting 12.30 – 3pm</b>
27	Joan O'Connor- 'Drawing Big Workshop critique session' 12.30pm – 4pm
<b>Friday Morning</b>	
	<b>9.30 – 12.00</b>
7	Life Drawing. Cost \$10.00 with Tanya Bamford King
14	U3A
21	Life Drawing. Cost \$10.00 with Tanya Bamford King
28	U3A
<b>Friday Afternoon</b>	
7	<b>Programme &amp; Competitions sub-committee Meeting 1 pm</b>

## LANDMARK HOMES

– Generous sponsor of the Tauranga Society of Artists Annual October Original Art Expo



**LANDMARK**  
H O M E S

*Don't build a house, build a Landmark.*

[landmarkhomes.co.nz](http://landmarkhomes.co.nz) 0800 477 110

